

The Advanced
Captive Portal
with Wi-Fi Marketing
and Analytics



SOFTWARE OVERVIEW

01

Platform

Kiwire on the cloud, on premises, opt multitenant.

02

Advanced Technology

Various login methods, integrations and more.

03

Wi-Fi Marketing

Advertisement page over multiple platforms and methods.

04

Wi-Fi Analytics

Reporting modules to allow you analyse user behaviour and more.

KIWIWIRE FEATURES

GUI interface for admin panel

Kiwire integrates with a few of useful tools designed to enhance your Wi-Fi solution

Various integrations

SMS ,Email, PMS, E-payment gateway, Microsoft AD, LDAP and more.

Customizable page designer

Provide users with a variety of snippets and dynamic templates to choose from and it support bootstraps.

Extensive API

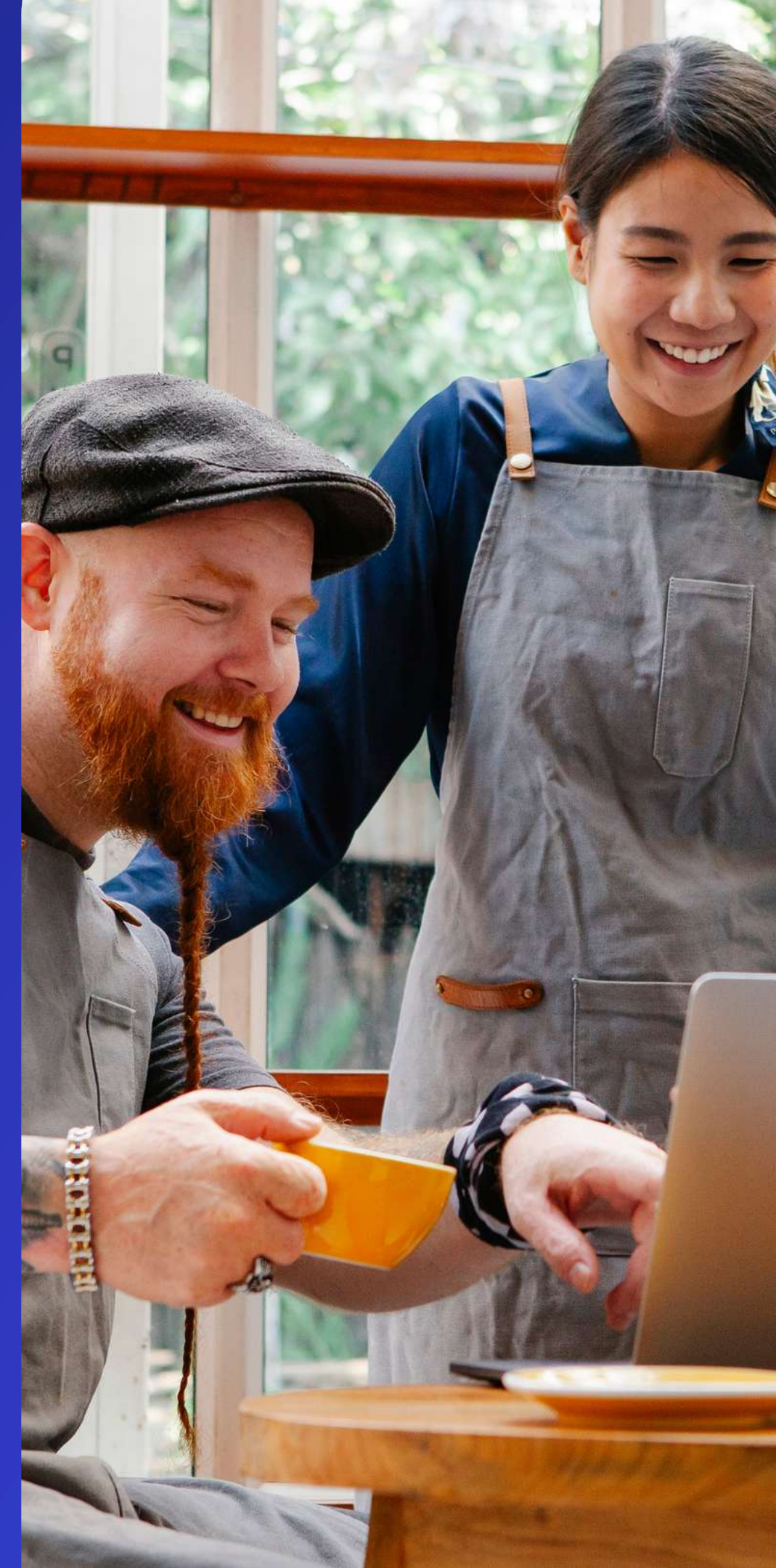
Formidable new API engine that provides simplicity and high performance.

Various login methods and flows

SMS / Email verification, social login, voucher login and more.

Secure and compliant

- Kiwire gives users a complete transparency of all the data collected by PDPA and GDPR.
- 2FA authentication for admin using Google Authenticator.



KIWIRE FEATURES

Public Survey

Allow anyone to view & respond public survey even without connecting to their Wi-Fi hotspot.

Marketing Platform

- Advertisement sent over SMS, email, browsers & API.
- Surveys, coupons, smart banner

Boost Performance

Better back-end performance compared to previous release.

White Label

Rebrand Kiwire to your own brand and promote your brand, where you are MSP or WISP.

Billing notification

Able to directly send all billing notifications to your preferred email addresses.

Reporting & Analytics

- All the data captured is stored within a centralized reporting dashboard, is quick & simple
- Powerful Wi-Fi analytics to capture user data in real-time, including demographics, insights & more



PMS Integration

Social Network

KIWIRE[®]



E-Payment Gateway



API / Email Marketing

Authentication Server



Call Accounting / Content Management



Kiwire Interfaces

Kiwire Cloud



Dedicated server with customized hardware specification.



Dedicated database, no sharing.

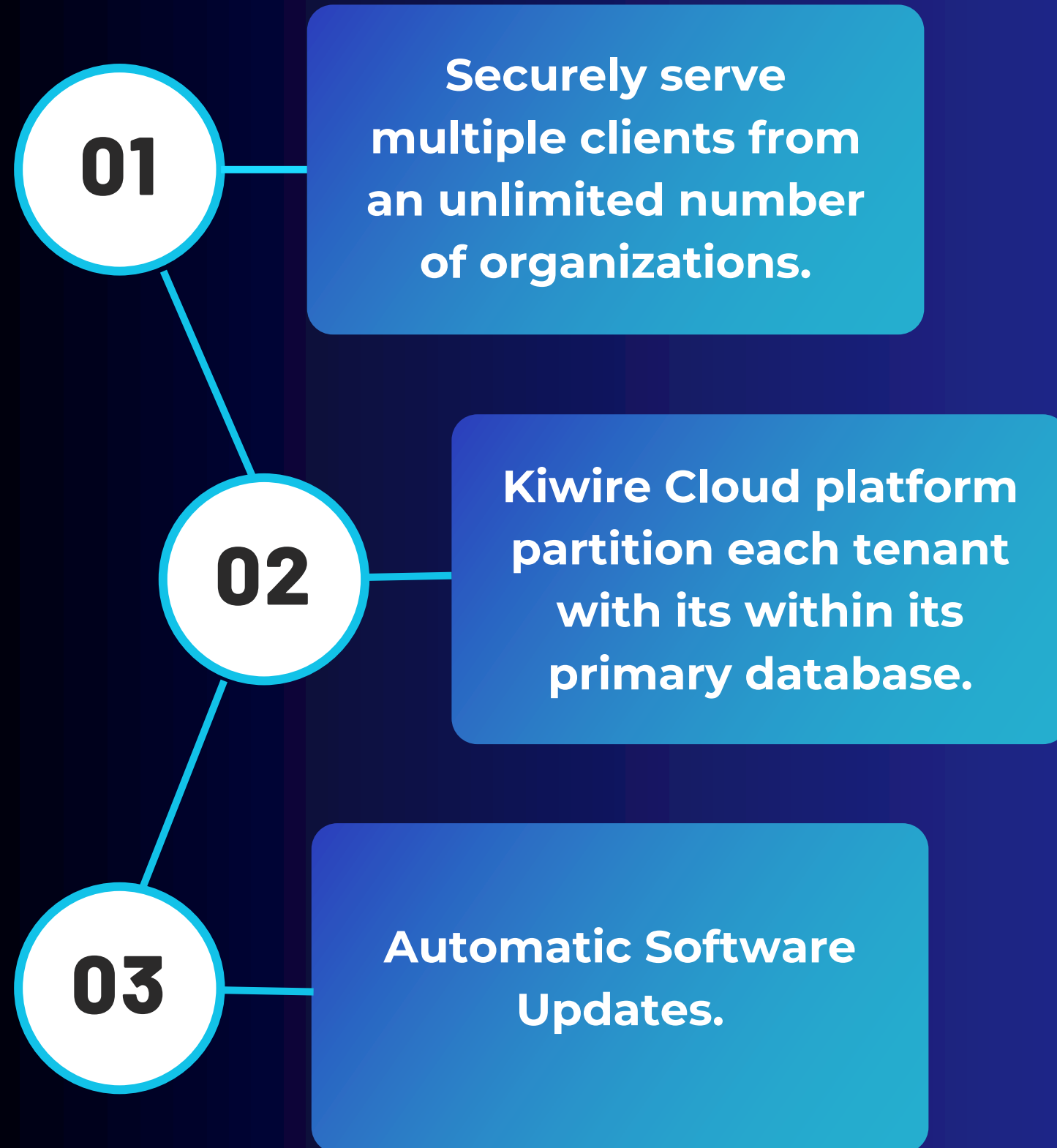


More stable in term of connection.



Some of the integration for example PMS works in on-premises Kiwire.

Kiwire Cloud Features



CLOUD

VS

PREMISES

Automatic
Software Updates

Server

Manage anywhere

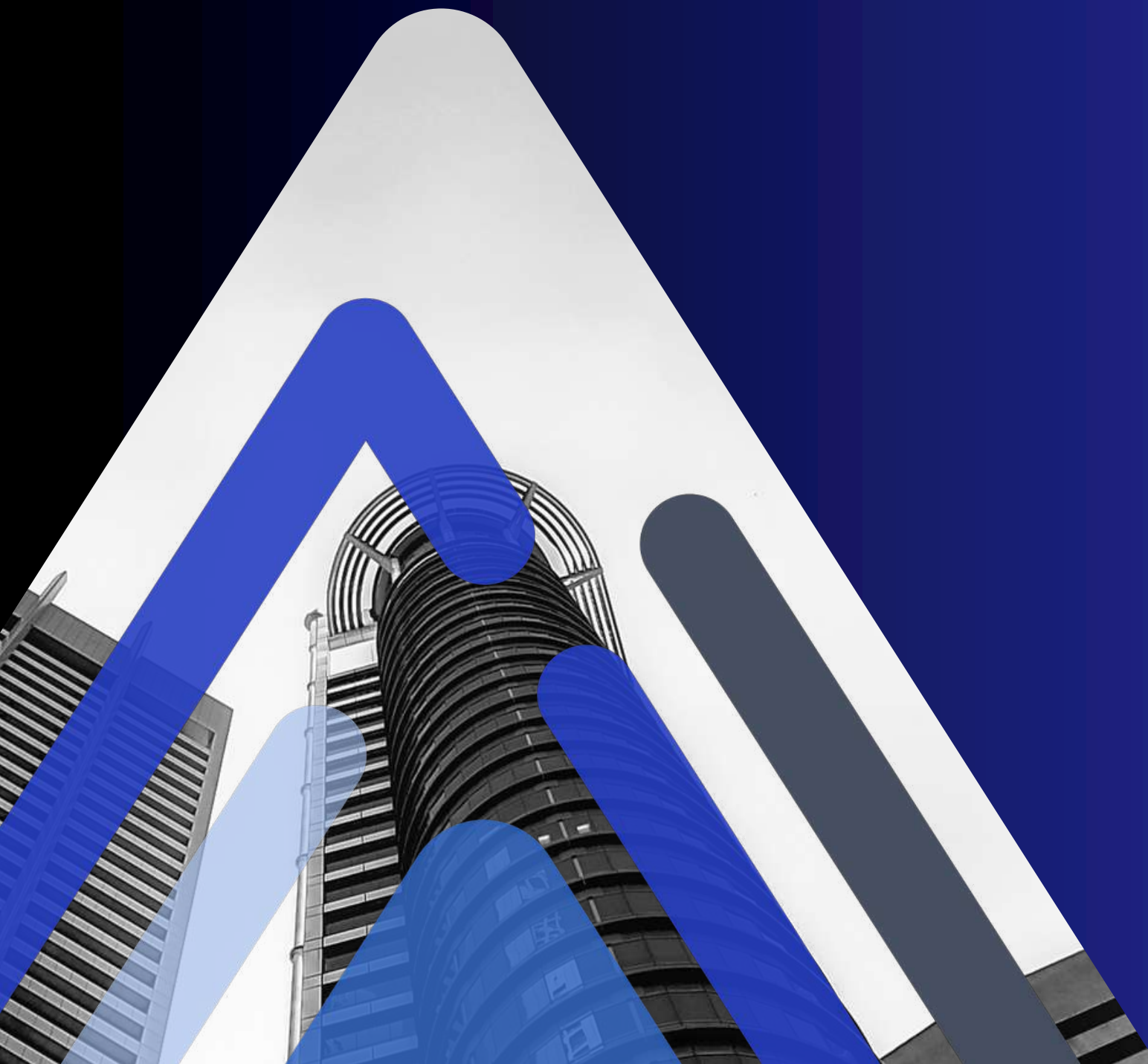
Security

Reduce
manpower for
troubleshooting

OS and Database

High Availability

Maintenance



How Does Kiwire Works

1

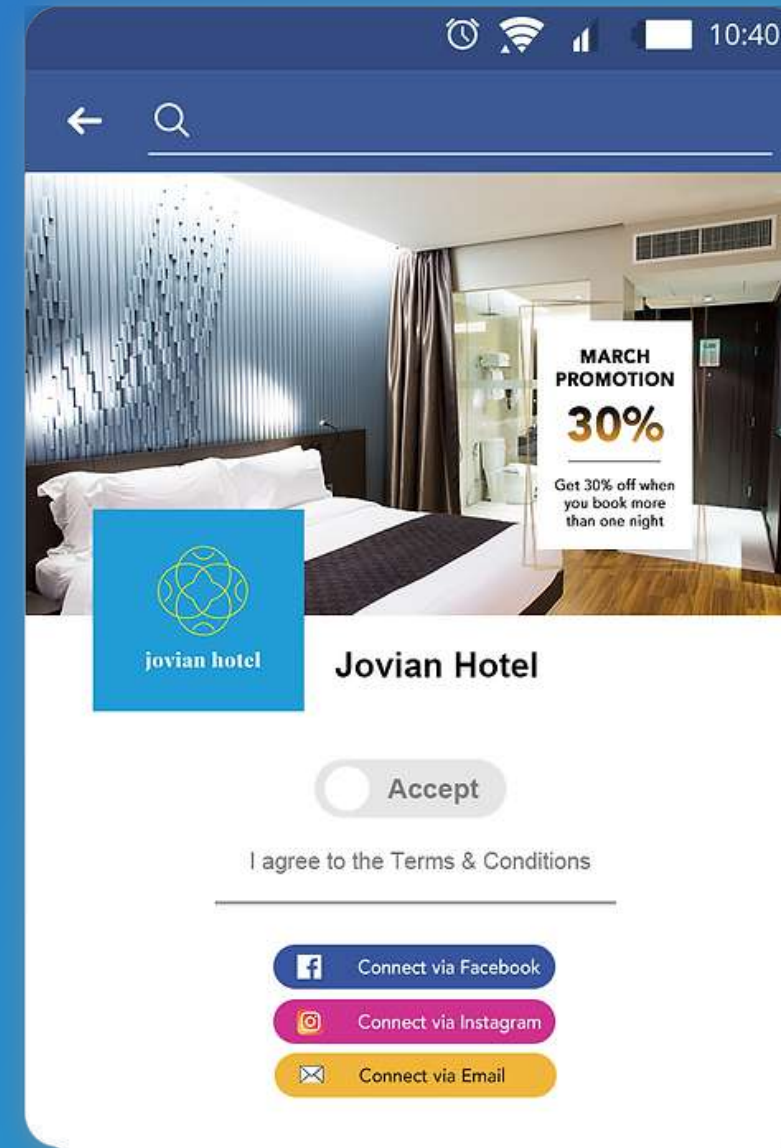
CONNECT



Guests connect to your open Wi-Fi.

2

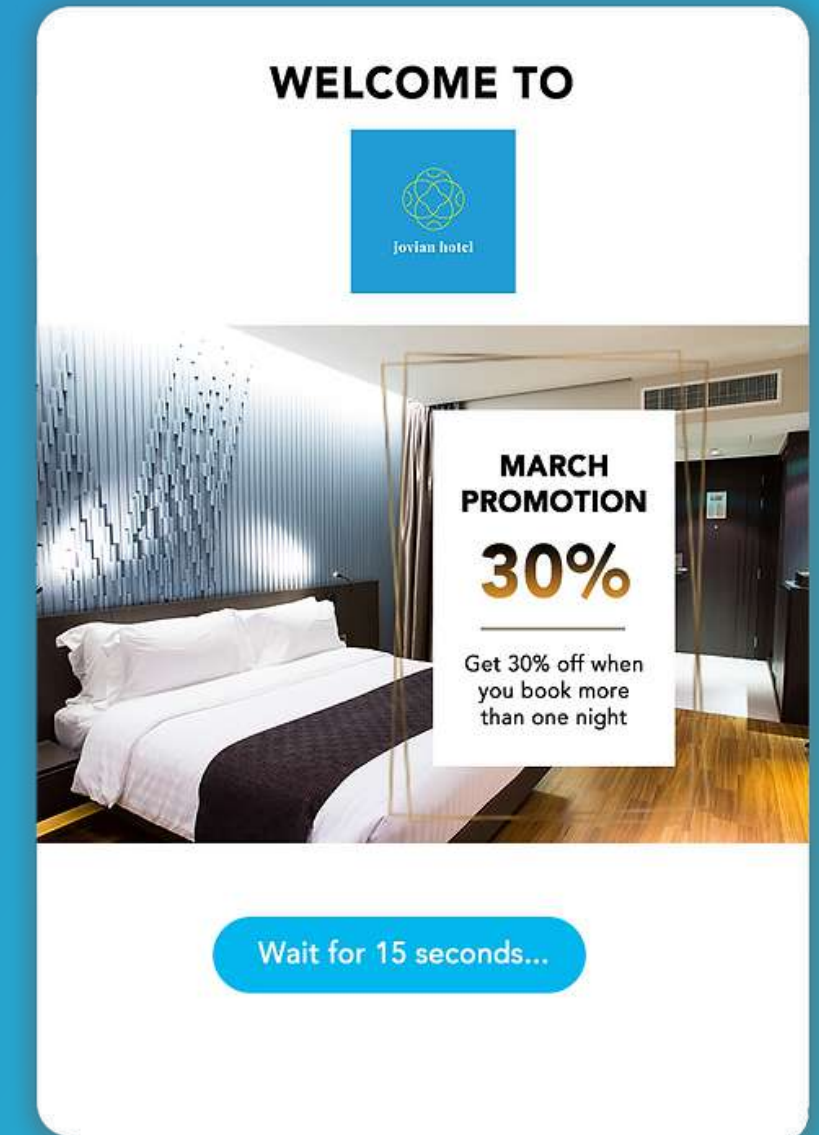
LOGIN



Login using social media, email, or SMS to get access.

3

ENGAGEMENT



Immersive experience with videos, images, ads and more.

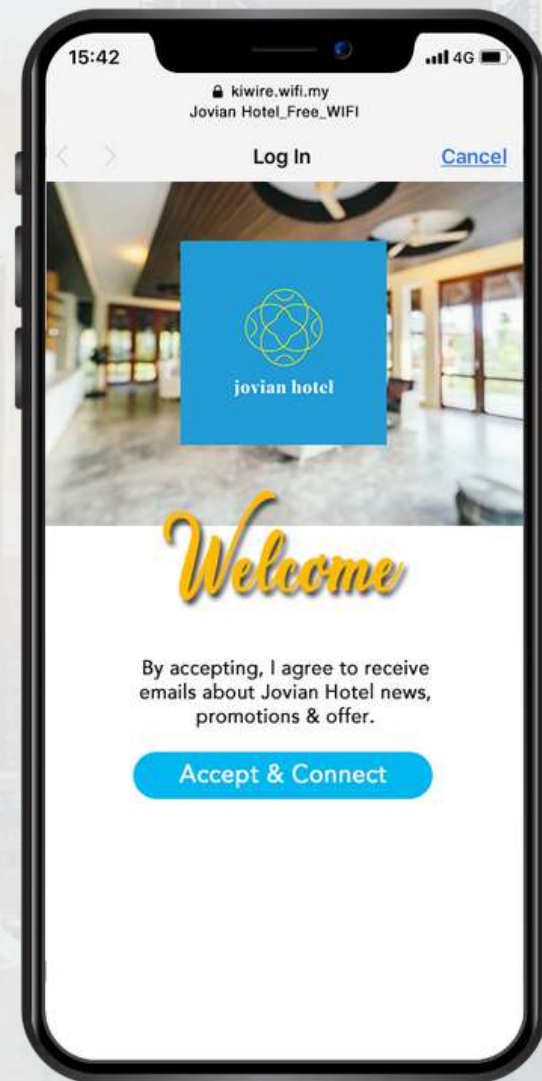
Our Software Solutions Work with Equipment from these Popular Brands



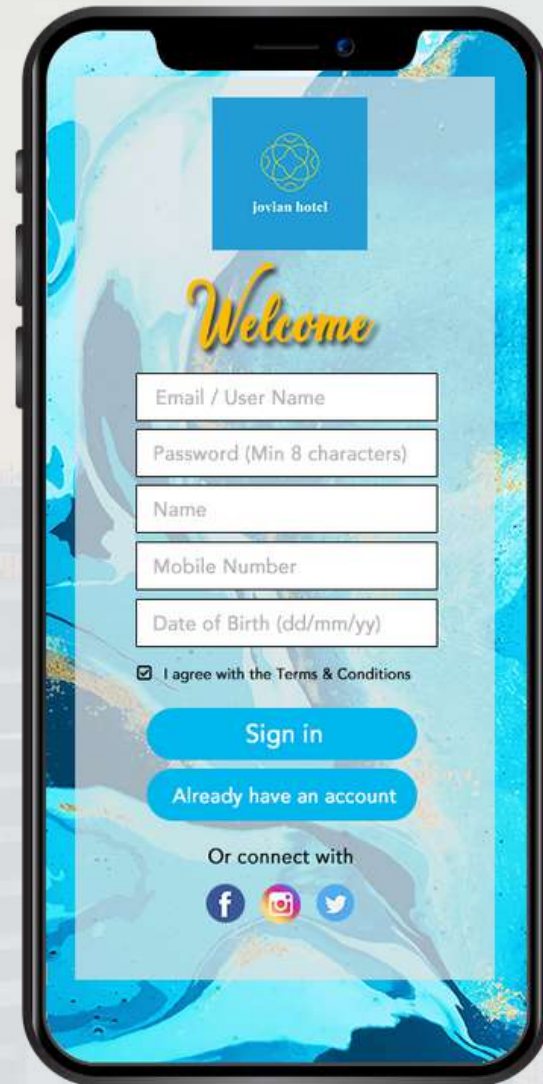
LOGIN FLOW EXAMPLES



Login Flow (via Self Registration)



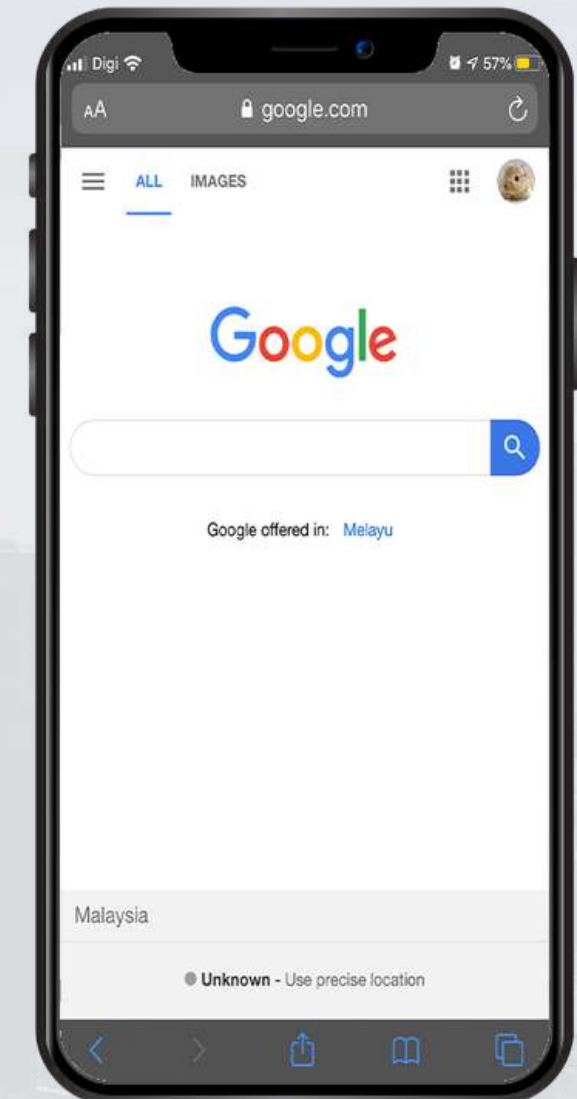
**Wait for
seconds for
advertisement**



**Fill up the form
or proceed to
login page.**

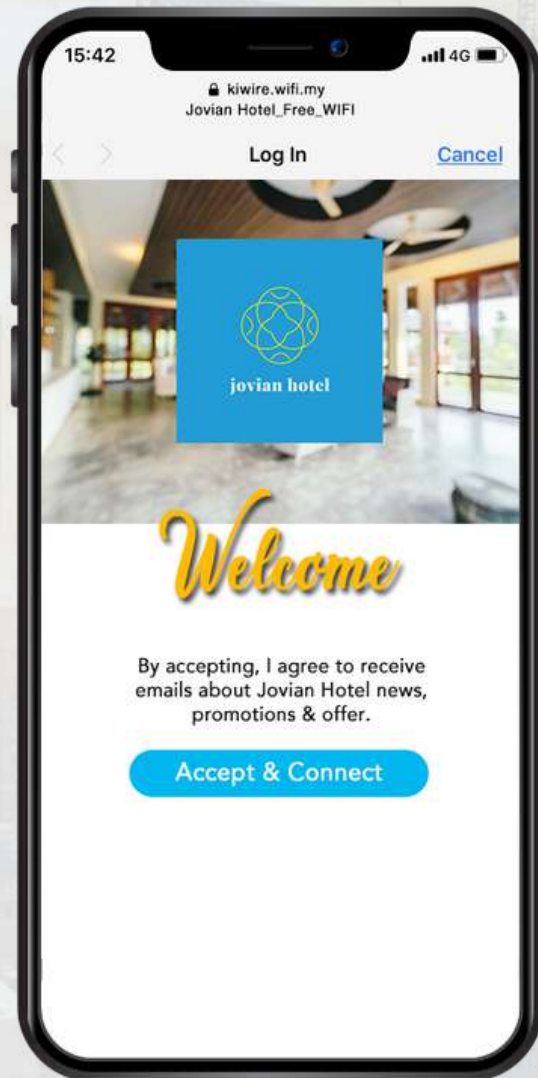


**User enter
username &
password**

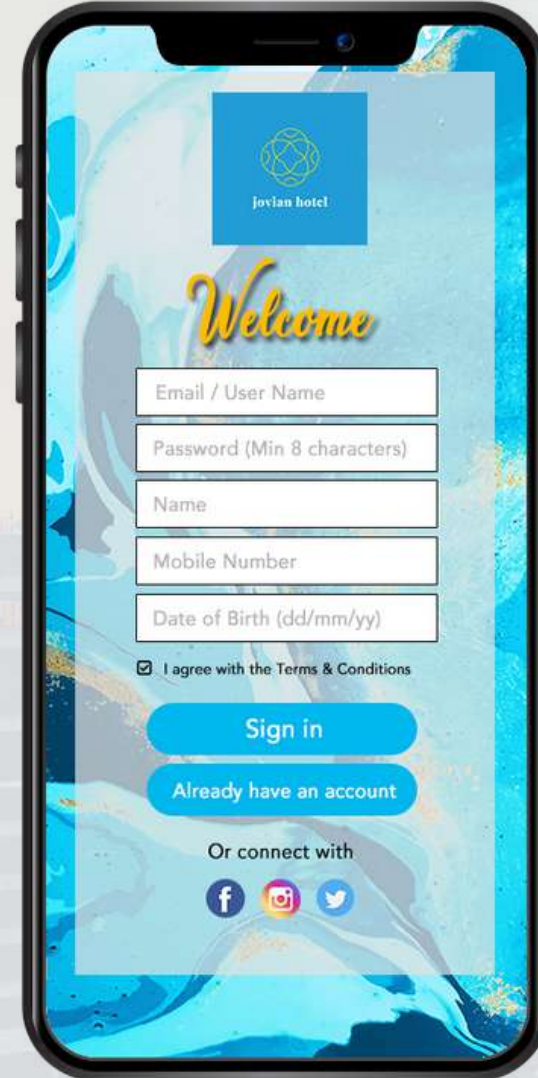


**Ready to
access**

Login Flow via Social Login



**Wait for
seconds for
advertisement**



**Choose social
media logo
option to login**

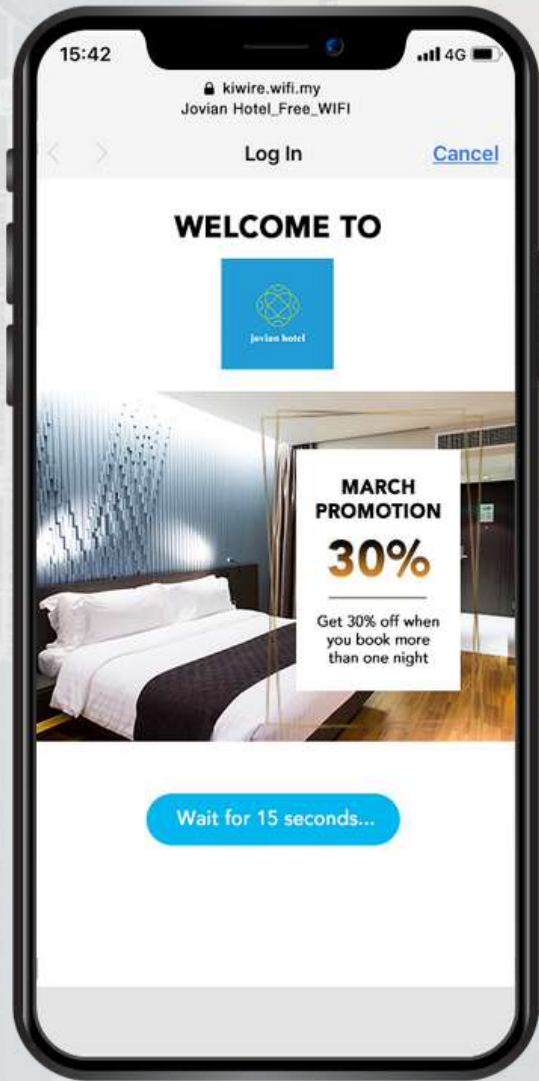


**User enter
username &
password**

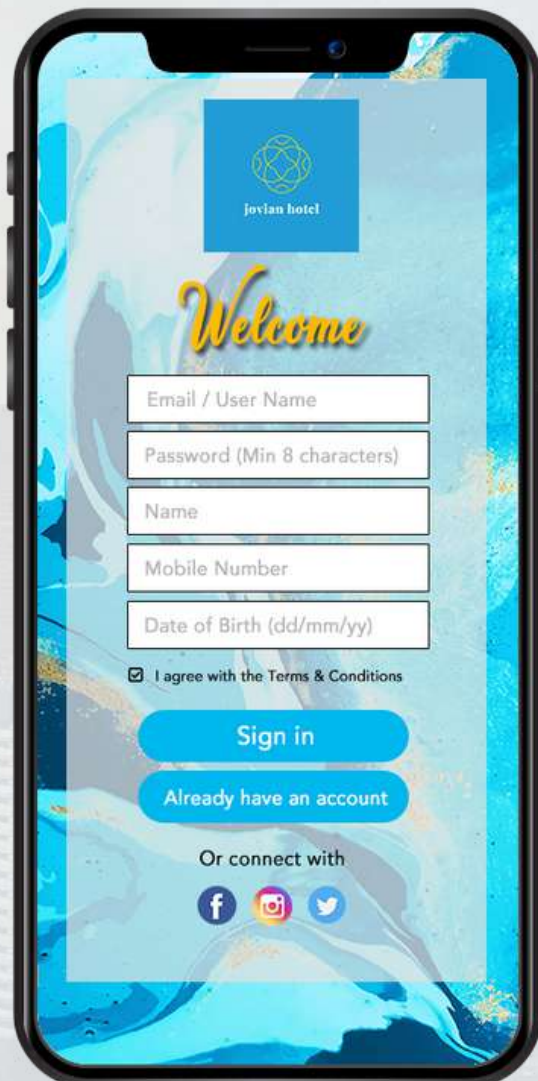


**Ready to
access**

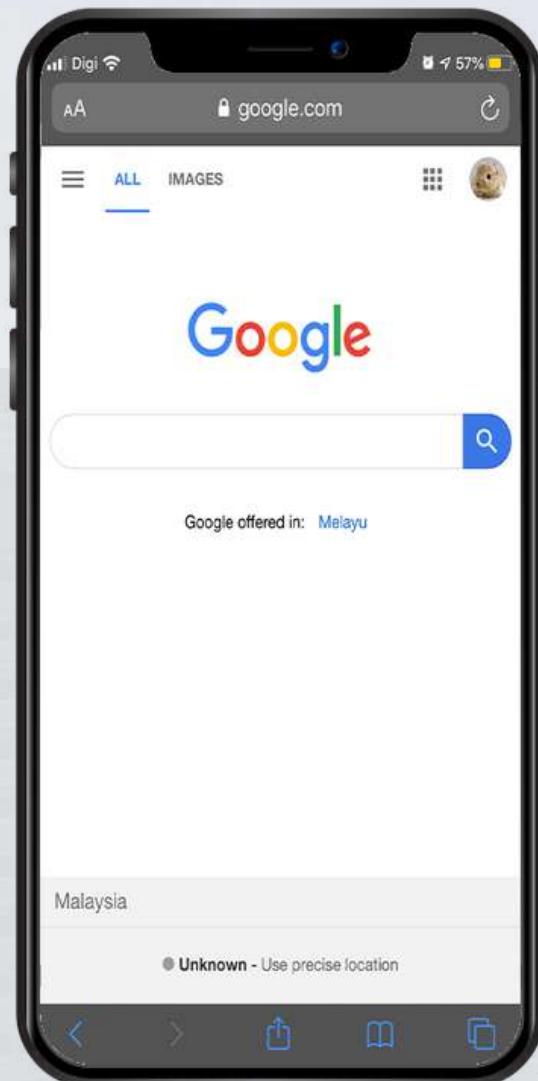
New User (via Registration)



**Wait for
seconds for
advertisement**

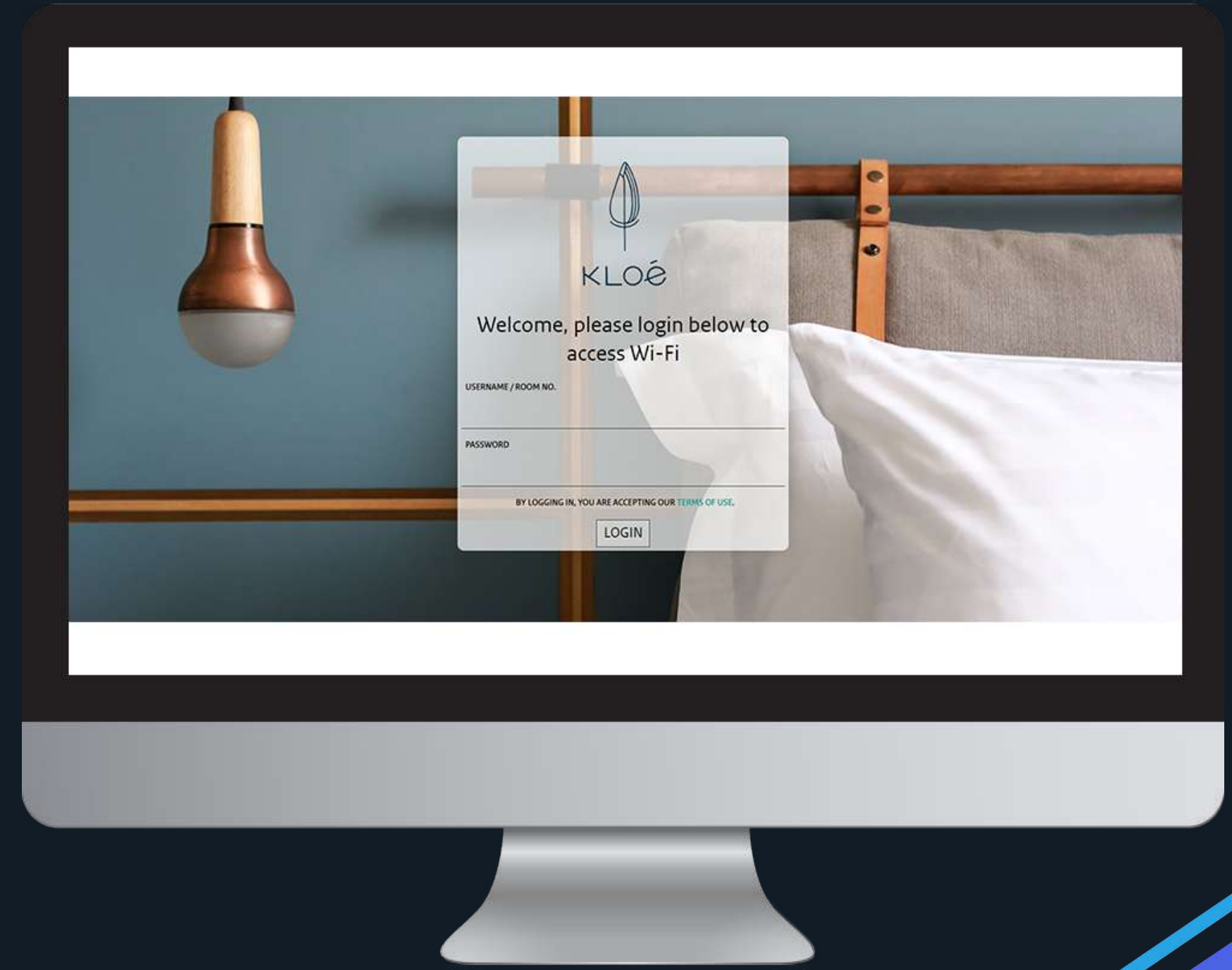
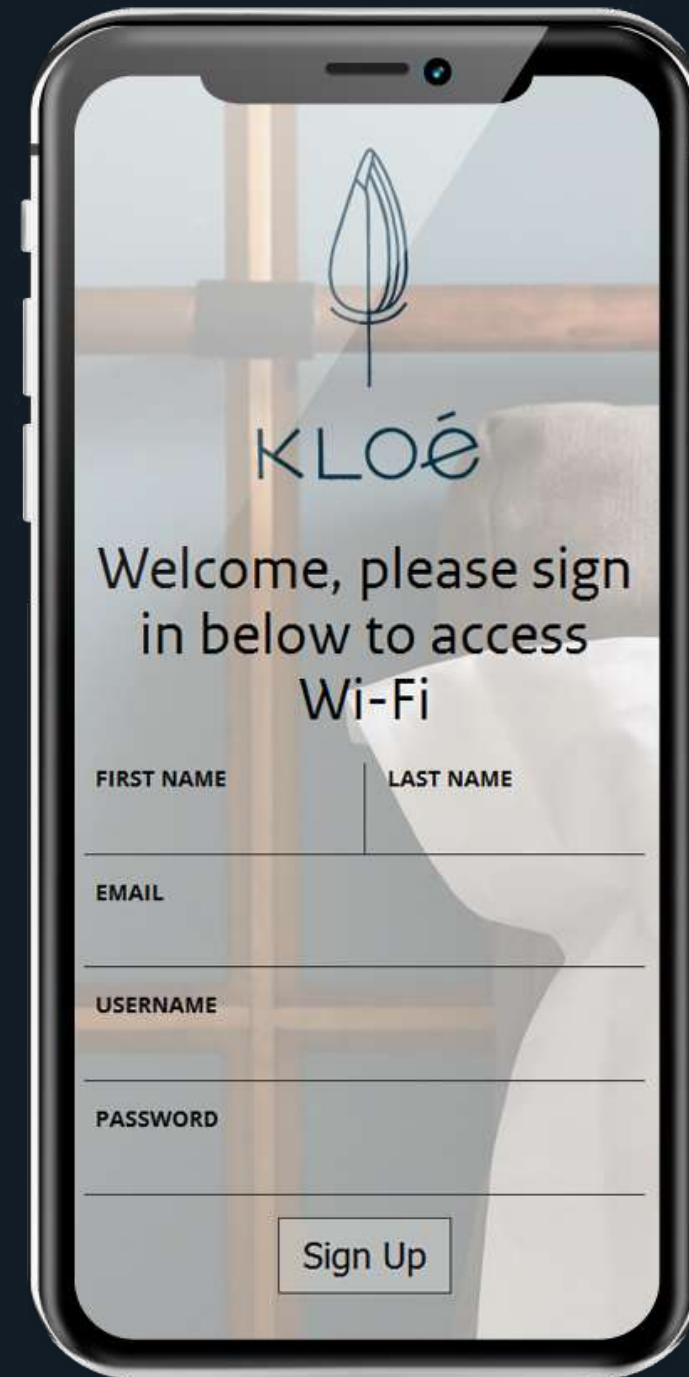


**Sign In button.
User fill in their
details.**

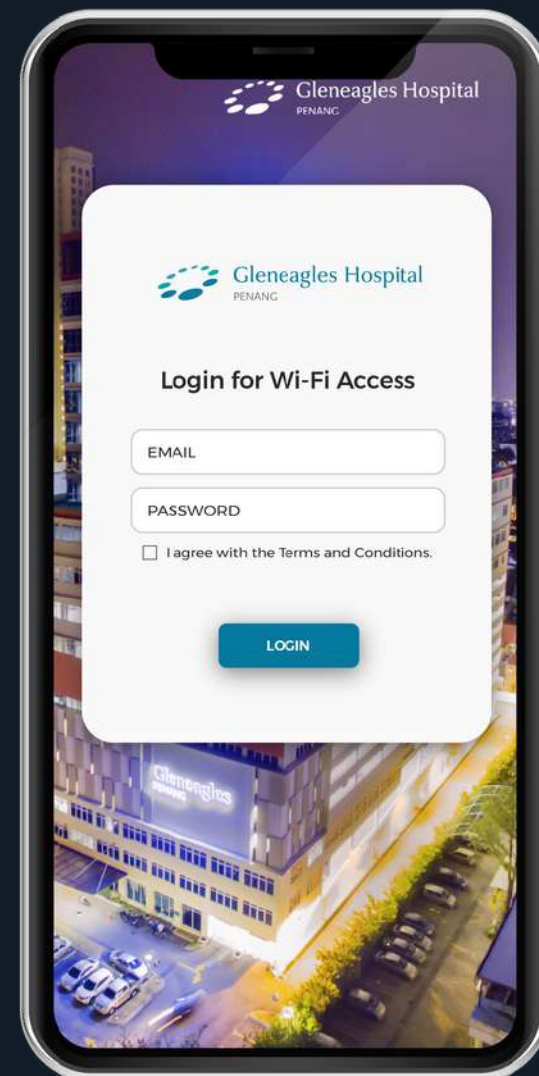


**Ready to
access**

Landing Page Hospitality

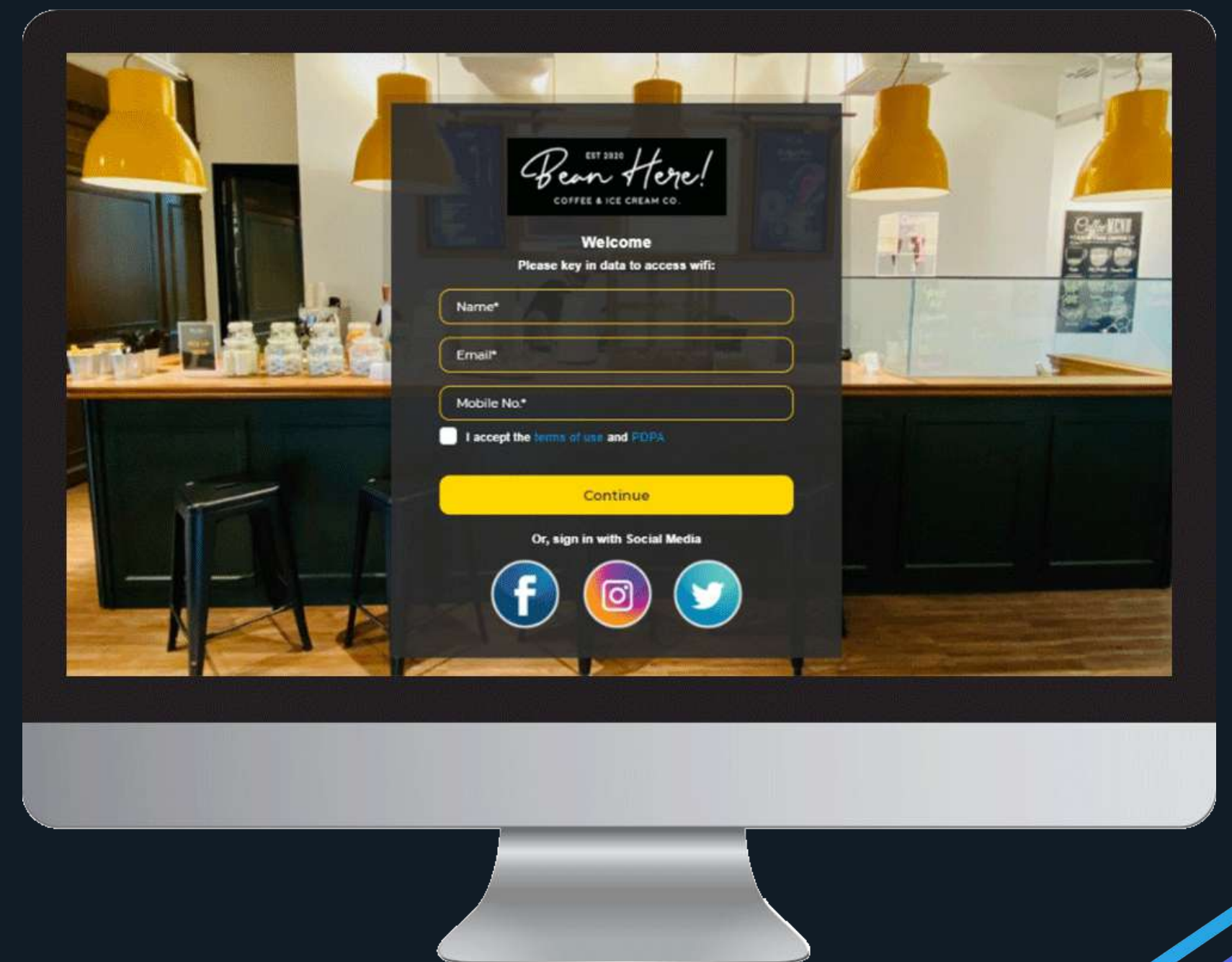
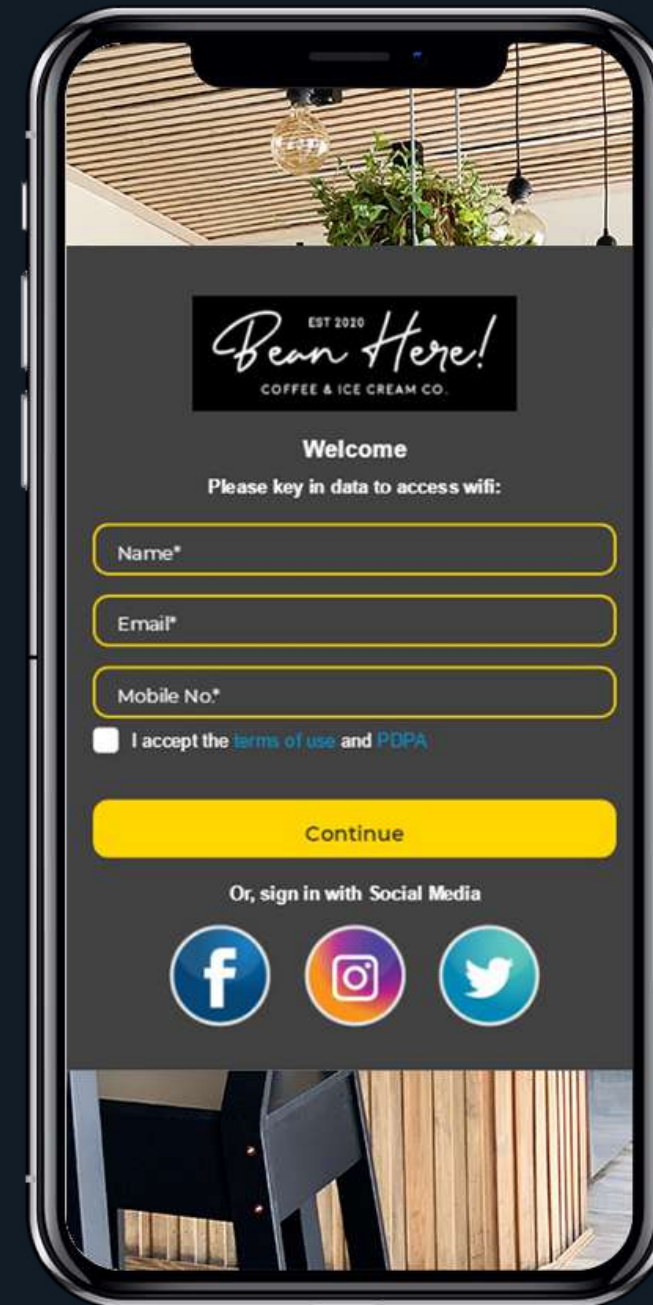


Landing Page Medical Centre



Landing Page

Food & Beverages



What is Campaign Engine?

—

Campaign Engine is a unique network marketing application that help you to gain many new user, engage your users and monetize your network.

—

You can force users to see an image or video ads for a few seconds before/after showing them the captive portal and authenticating them.

How Does it work?

Kiwire Campaign

Campaign Benefits

Marketing Strategy Platform

- Introduce new products / brands.
- Notifications / news.

Engage User

- Good ads will attract more users.
- Display offers/discounts.

Monetization Platform

- Sell ads space to airline, food delivery and many more.
- Ads with promos / discounts/offers will attract guest to buy.

Kiwire Campaign Engine

Trigger

On Connect >

On Login >

Dwell Time >

Recurring Login >

Milestone >

Last Login @ Last Seen >



Action

> Ads [Video /Text/ Image]

> Notify [API/SMS/Email]

> URL [Redirect to Location]

> Web Push Notification

> Promote Apps

Targeted Campaigns using Persona / Triggering



TRIGGER:

Sarah
First/repeat login user
Last seen 29 days ago



PERSONA:

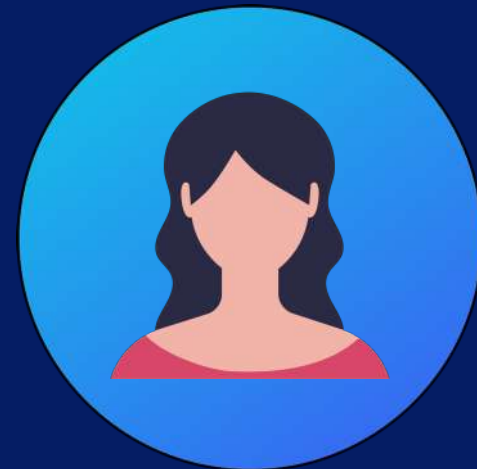
25 Years / Female



ACTION:

Display ads /
promo / discount

CAMPAIGN REMARKETING



Customer



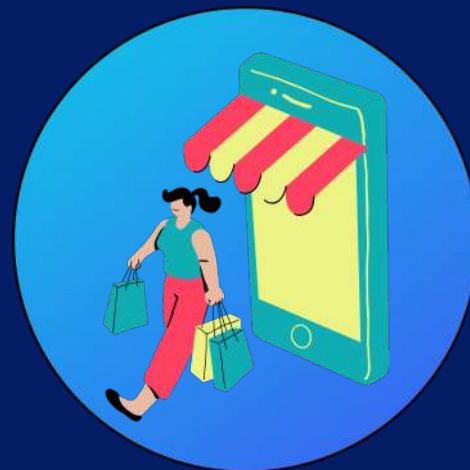
**Visit Kiwire
enabled store**



**Connect to
network,
leave the store**



**Ads will appear in
within or outside**



**Capture
interest**



More revenue

User Data Collection



SOCIAL NETWORKS

Full Name, Email, Phone number, Age Group, Gender, Location.



SELF SIGN UP

Name, Email, Phone number, Age, Gender, Additional fields.



SURVEY FORM

Personal details, Simple Q&A, Feedbacks, Suggestions & Other related data.

BENEFITS FROM COLLECTING USER DATA



Wi-Fi Marketing

Blast promos / offers through emails / SMS to attract users to come back.



User Behaviour

Understand type of users visit the premise, engage more activities / promos related to targeted users.



Better Experience





Gather feedback / suggestion to improve business and provide better experience for upcoming users.

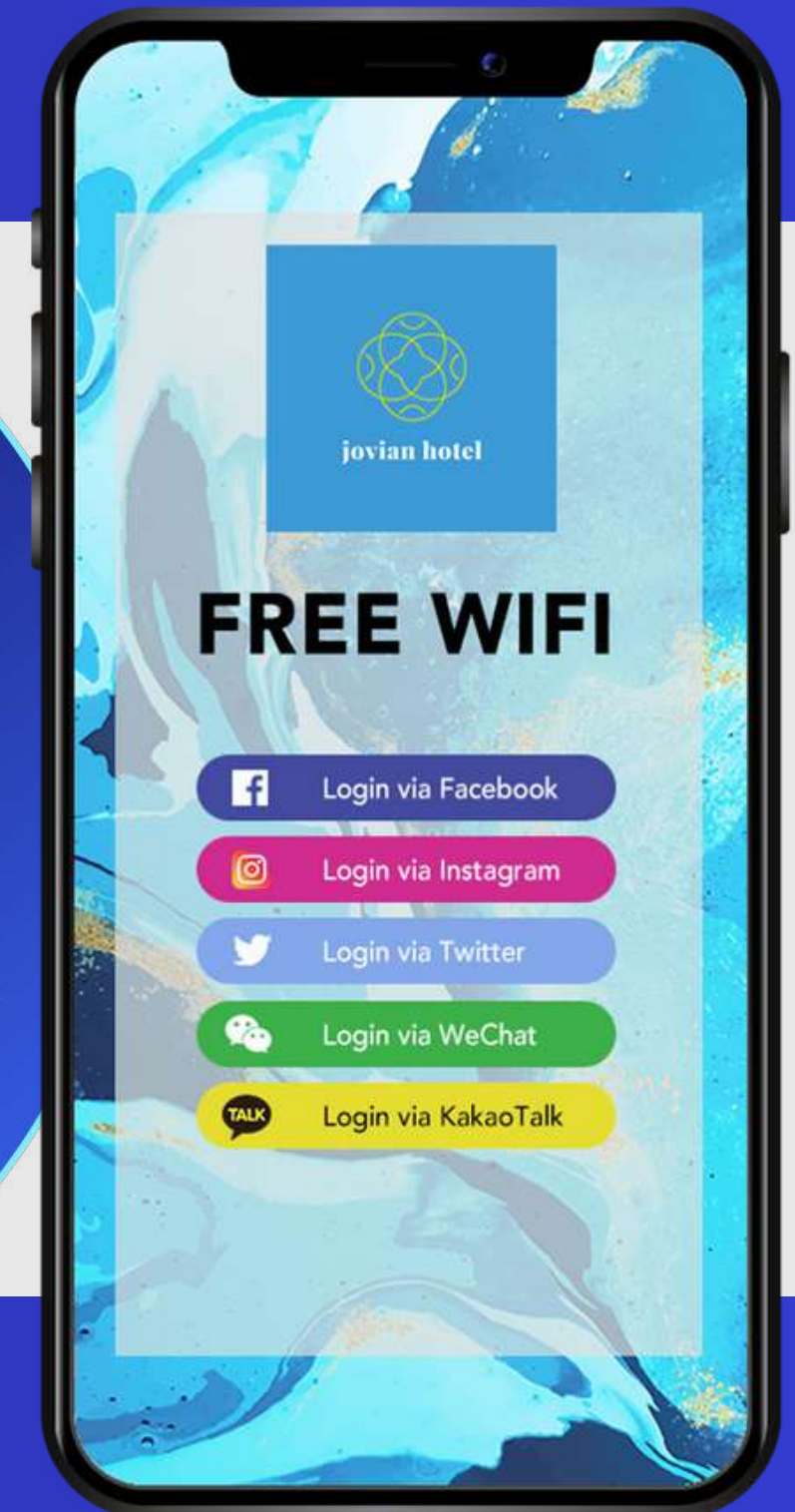
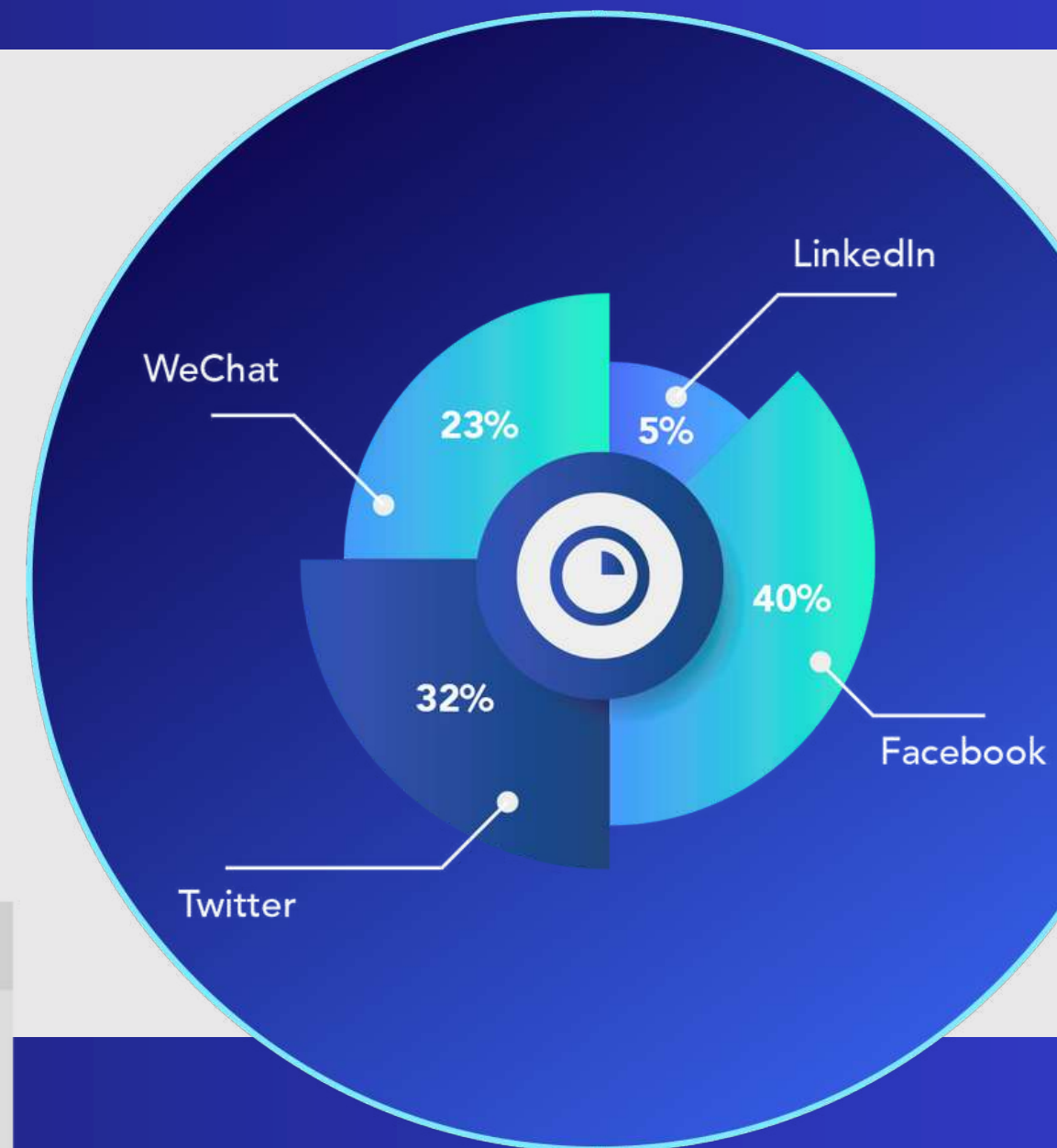


Wi-Fi Analytics

Real Time Insights at your Fingertips

Up-to-date customer data in a simple and easy-to-use dashboard that can automatically collect guest profile information from social networks, website or email marketing, including demographics, locations & interest.

User	Platform	Gender/Age
John Lee		M 30-35
Nisha Arman		F 18-25
Siti Sarah		M 45-50
Alex Wong		F 25-30



REPORTING



LOGIN & MONITORING

Generate analytical reports on user activity and network performance, including real-time equipment availability status.



ACCOUNTS

Summary overview of your users.



BANDWIDTH

Track the total bandwidth usage by network users.



INSIGHTS

Retrieve information about the device type, brand, and user details (such as social/register login) when connecting to the network.



CAMPAIGN

Generate a report detailing all impression views by users.

Report Analytics



Bandwidth Reports

- How much bandwidth has been consumed monthly?
- Decision on reducing or increase bandwidth



Login Reports

- How many people using wi-fi on daily basis?
- When most people using wi-fi?
- Where does most people connected to? Zones?



Campaign Reports

- Is my advertisement effective? How many impression and click?
- Is the waiting time too long? Is the advertisements too many?
- Is the advertisement not related to my audience?



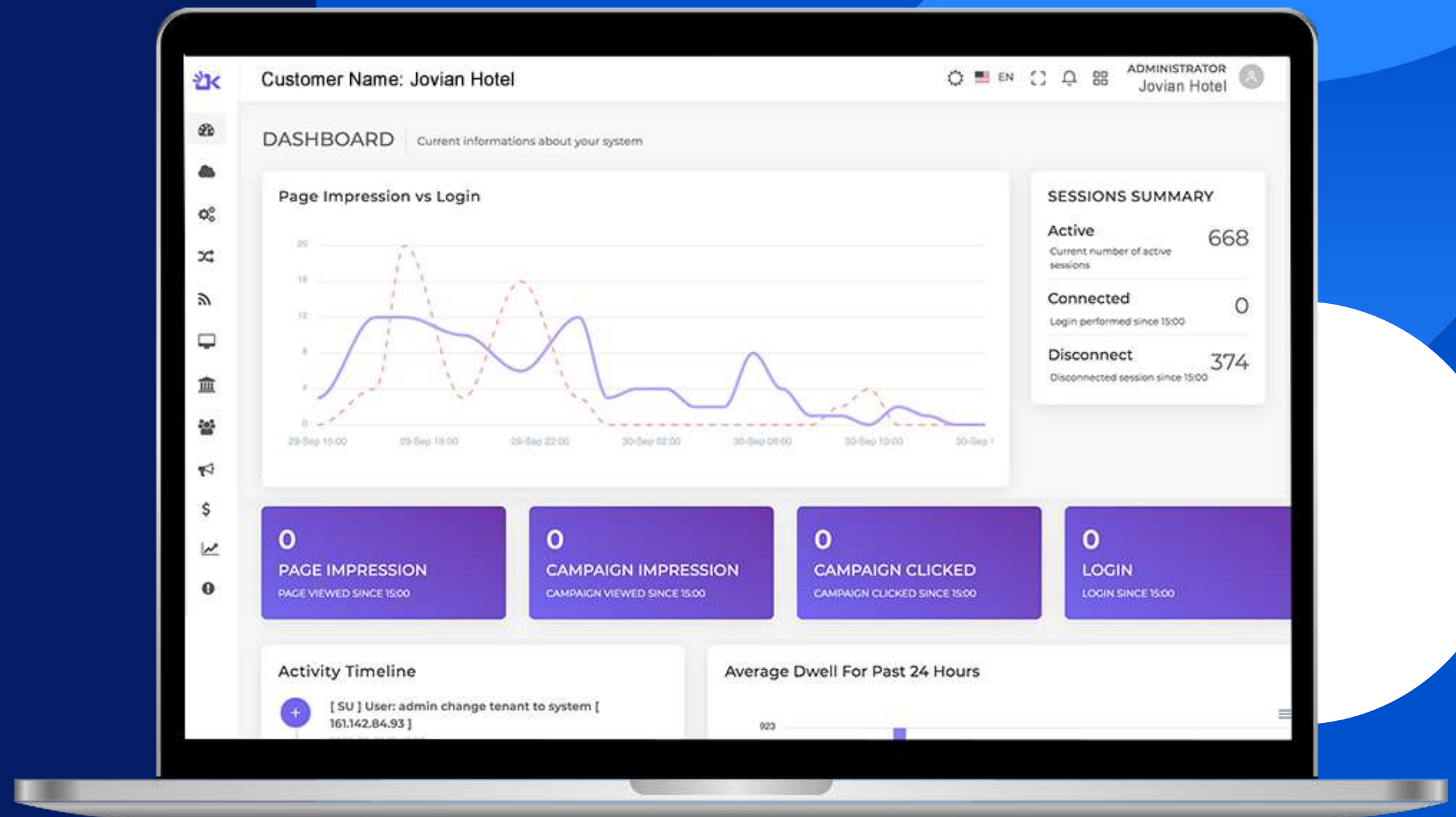
Insight Reports

- Understand the type of audience using Wi-Fi?



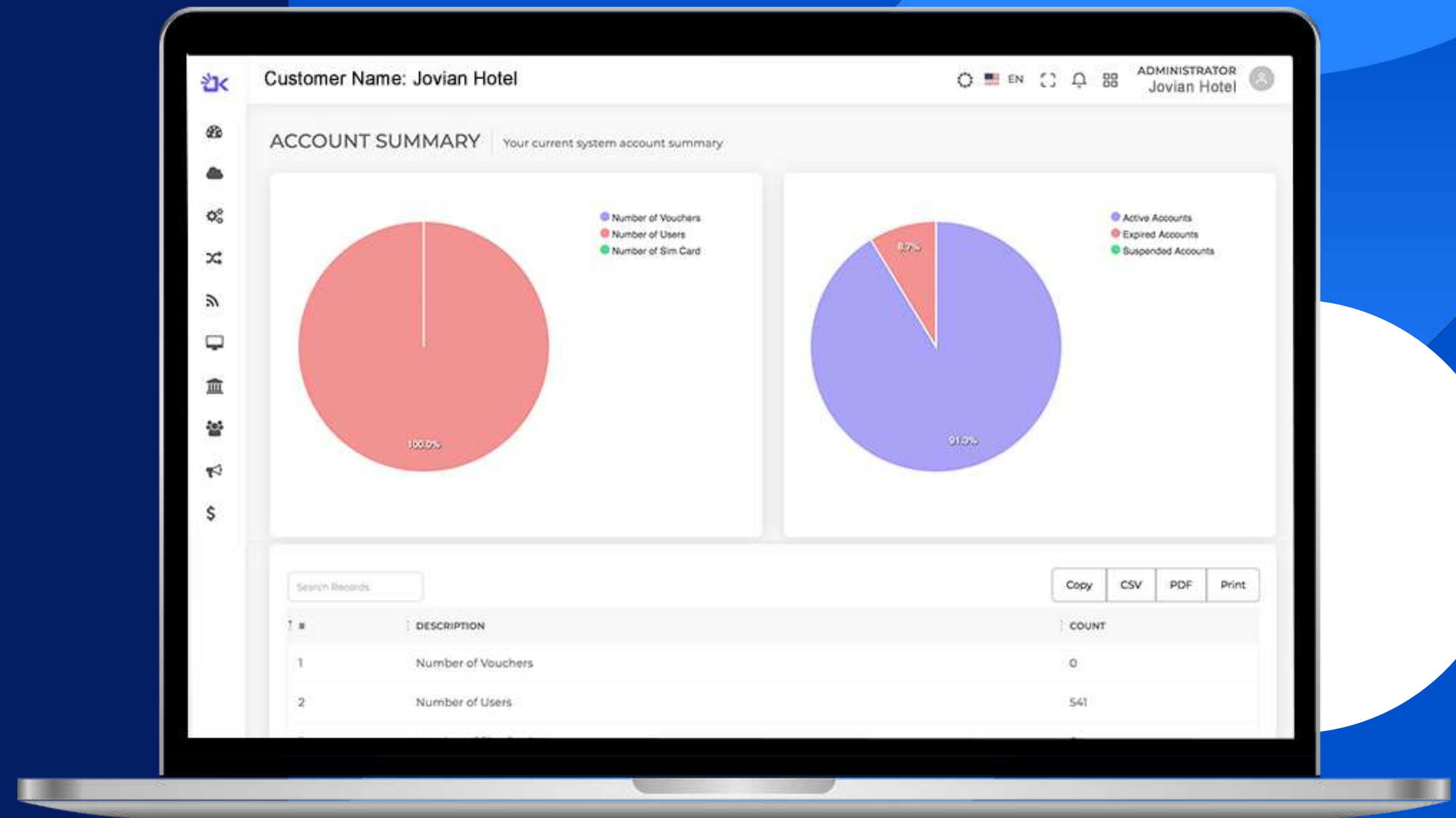
Dashboard Overview

The Dashboard offers a number of self-contained indicators that summarize the network and its status.



Account Summary

The Account summary report provide you a summary overview of your users.



SUCCESS STORIES



Project: MEASAT



A Malaysian communications satellite operator



Provides satellite services to leading international broadcasters, Direct-To-Home platforms and telecom operators.



Measat is looking for solutions provider to provide Wi-Fi solutions with build in radius capability for their hotspot call “Connect Me Now” within Malaysia.

Solutions:

- Kiwire installed @ cloud with more than 3000 sites across Malaysia.
- Business model - Prepaid card and postpaid
- Remote location install Mikrotik to communicate to Kiwire Cloud.

Project: BOTSWANA



Botswana located at the center of Southern Africa.



The entire network catered to a population of around 500,000 residents who used the network regularly.



Implemented rural Wi-Fi hotspots across the country for its residents which is in the city, government office, hospital, shopping mall, airport & more areas.

Solutions:

- Provides login via unique vouchers and one-click-login.
- The maximum limit 30 or 60 minutes per day for per user.
- MikroTik routers to deliver higher throughput and increased power to drive the latest Wi-Fi technologies.

Project: ONE UTAMA



Largest shopping mall in Malaysia.



With an area of 5,590,000 square feet and containing 713 stores.



OneUtama IT team looking for solutions provider to provide Public Free Wifi solutions with integration with OneCard Application.

Solutions:

- Kiwire & Omayia installed @ OneUtama server room
- Business model – Big data collection (social media login) and OneCard Account
- Install Mikrotik to communicate to Kiwire

Project: SUNGEI WANG PLAZA



A strata title shopping centre in Bukit Bintang, Kuala Lumpur.



An aggregate retail floor area approximately 800,000sq.



Solutions:

- Sungei Wang utilize Synchronweb Kiwire & Omayya to analyse the shopper traffic and understand how the mall performs.
- Using Cambium Networks Wi-Fi Technology with IP-Com network switches.
- Setup/Configure Wi-Fi network.

Project: Avante Hotel.



A modern contemporary hotel located in Petaling Jaya.



Next to the Bandar Utama MRT station.



Kiwire greatly improves guest experience at Avante Hotel with high-speed Wi-Fi solution.

Solutions:

- Kiwire installed for guest Wi-Fi login which interfaces with IDB front office system
- Microsoft AD Server Setup
- Veeam Server Backup
- VMWare Setup



THANK YOU!

CONTACT US :

 +603-5880 5486

 sales@synchroweb.com

 www.synchroweb.com

FOLLOW US ON SOCIAL MEDIA

