



**SYNCHROWEB**  
TECHNOLOGY



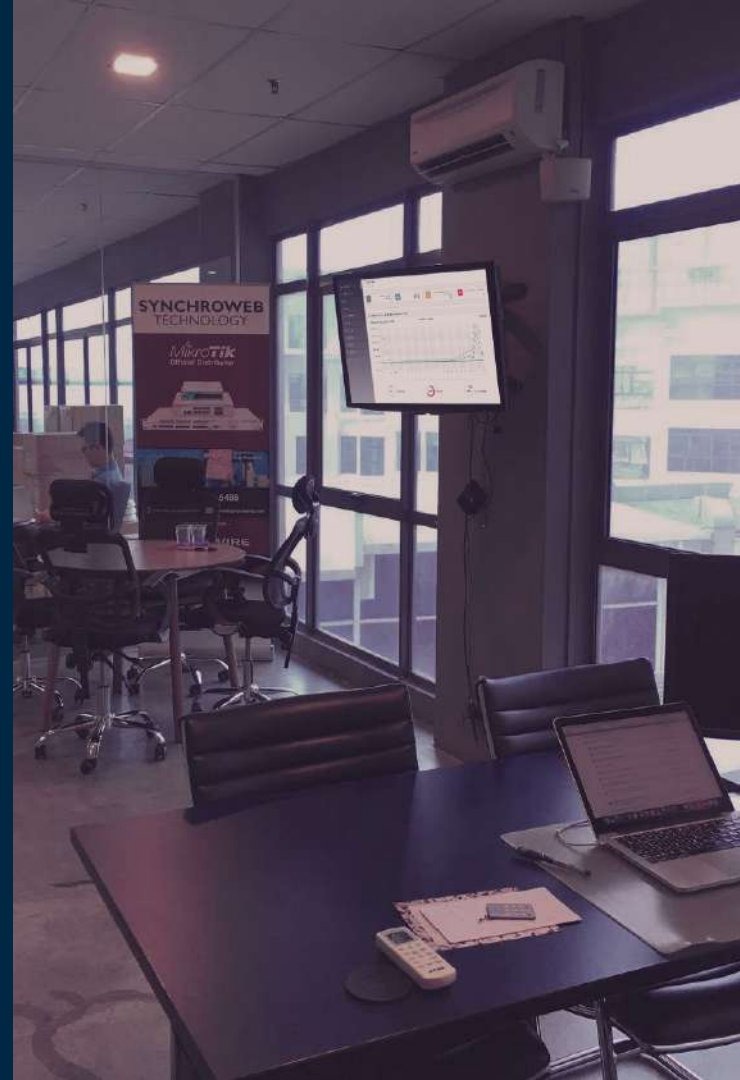
# OMAYA WORKSPACE

## LOCATION TRACKING ON ASSETS & STAFF

# About Synchronweb



- Establish in 1999 and in-corporate in 2001
- Dedicated Support Team and Engineer for products
- Own R&D team and lab for software and Technology development
- 24 x 7 Support Call Services



# OUR BUSINESS TODAY



**SOFTWARE  
SOLUTIONS**



**DISTRIBUTIONS**



**TRAINING**



**CONSULTANCY**

# OUR SOFTWARE



Wi-Fi Captive Portal



People Counting

---

## OUR PRODUCTS DISTRIBUTORS



# WHAT IS OMAYA WORKSPACE



Workspace edition enables you to track, monitor and analyze your workspace activity. It provides tracking capability on your man power, critical asset, and visitor.

Know where they are at any time and with our control governor, you can prevent unauthorized entry to secure zone, prevent clustering of people within hazardous zones to ensure the safety of your workspace.



**Check-in / Check-out**  
**Note each time personal or asset enter or exit a space.**

- Create timeline.
- Employee Safety
- Highlight bottleneck.
- Real time reporting.



**Taking Stock**  
**Map which asset located in given time.**

- Count asset moving thru station
- Keep running stock of crucial asset.
- Search & Find



**Monitor, Analyse Alert.**  
**Record movement for analytics and automation.**

- Generate data
- Automatic trigger and alerts.
- Emergency

## Sample Application.

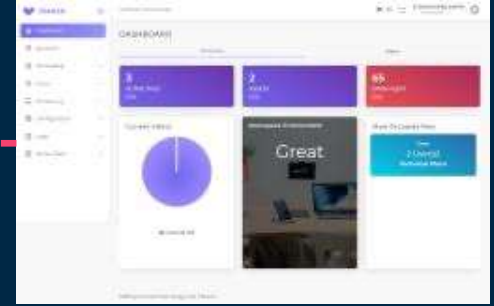
The high accuracy of our solutions enable organization to enable cutting edge use case with less hassle and wastage.



## Industry Application.

**OMAYA**<sup>®</sup>

Omayya Workspace is design specifically for Smart building, Healthcare , Airport and offices.  
Omayya Workspace to modernize , improve efficiency and safety.



## How does it Work.

OMAYA®

Omayya Workspace utilize primary BLE technology to scan ble tag that is attach to personal or asset. Wireless sensors mount onto the equipment continuously stream location data to Omayya Workspace.





## Industry & Logistic.

### Asset tracking application

- Search and find
- Asset utilization and inventory
- Order & material traceability
- Employee visibility & safety.

### Business outcome

- Make better decision
- Control throughput
- Improve return on net assets
- Reduce lead times and improve cashflow.



## Healthcare.

- **Asset tracking application**
  - Search and find
  - Staff & Patient visibility & safety
  - Key Asset management & inventory
  - Improve regulatory compliance
- 
- **Business outcome**
  - Boost productivity
  - Improve patient safety
  - Reduce asset management cost.

## Personal Card Tags.

Personal Card tag is a button-equipped, IP65-compliant tag for people. Give the badge to your employees, staff members, or visitors to track their location and movement and enable them to notify you on panic situation or other predefined events. And its RFID compatible



Telemetry



LED



Button



IP65



Security



Temperature



## Lanyard Tag.

Turning any standard ID card into a smarter one.

The lanyard tag enable contract tracing, people visibility and safety enhanced indoor locations.



Telemetry



Security



Shock resistance



## Asset Tags.

Track assets with robust tag with replaceable battery, assign function on event on press of button. Small but powerful.



Telemetry



LED



Button



Temperature



Security



## Wristband Tag.

Activate alarms if an employee or visitor enters a restricted area or leaves a specific location. Wristband Tag enables you to locate anyone in real time and to analyse their movements over time.



Telemetry



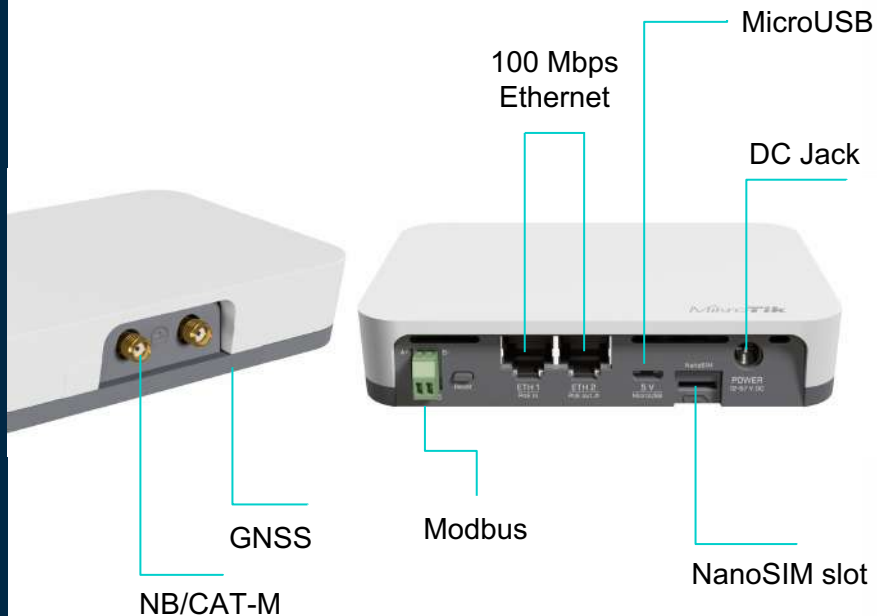
Tamper & Water Proof



Security



Temperature



## MikroTik Knot

The newest addition to the MikroTik IoT product family – KNOT – is a truly universal device with exceptional connectivity options and protocol support. It is an IoT Gateway that uses Narrow Band and CAT-M technology.

- Wireless: 2.4 GHz 802.11 b/g/n dual-chain
- Bluetooth: Version 5.2
- Ethernet ports: 2 x 100 Mbps PoE-in and PoE-out
- Size of RAM: 64 MB
- Storage: 16 MB flash



#### Tags

- Battery level
- Button click
- Dwell
- Absent



#### Spaces

- Entry
- Exit
- Detected
- Temperature
- Count



#### Time

- Start time
- End time
- Selected days
- Daily



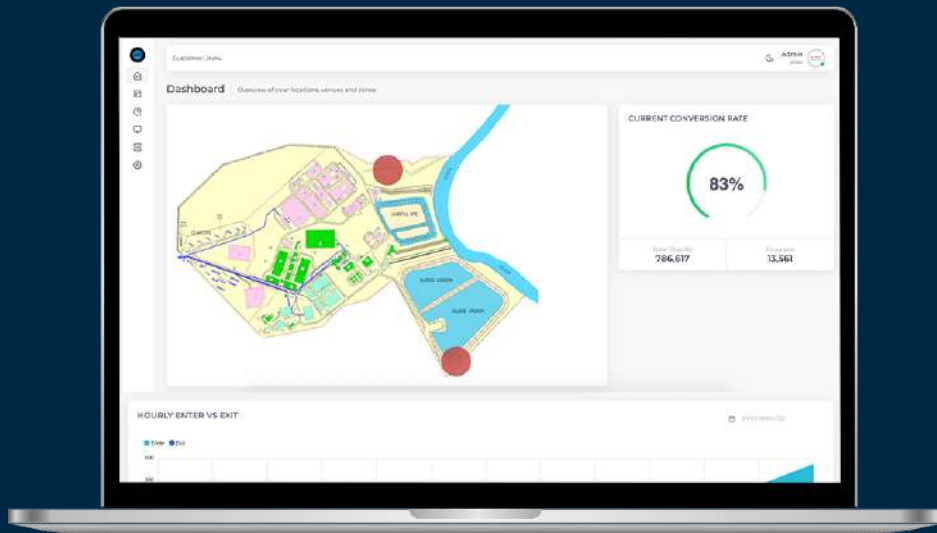
#### Trigger

- Webhook
- API
- Email
- SMS
- Who
- Priority

## Rules Management Example .

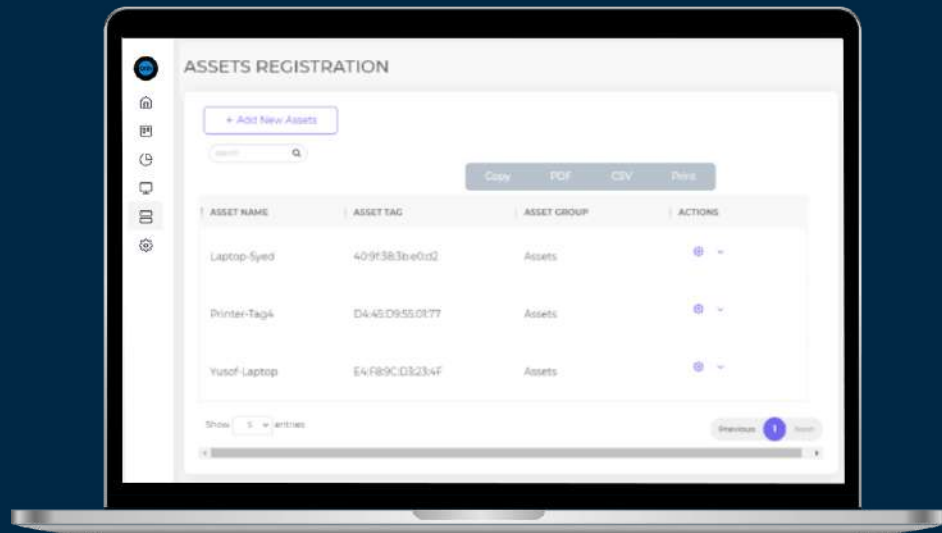
One of key function of omayo: workspace is automation , think it as an 24/7 governor that govern your space with rules to ensure all are operating at optimal , safe and secure manner.





## Dashboard Overview.

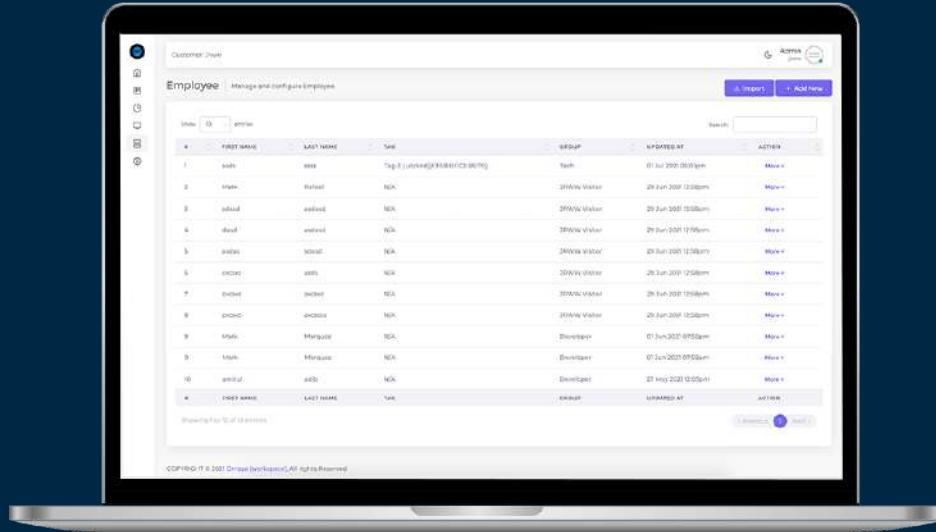
Workspace dashboard provide you an overview of your workspace key stats such as alert , asset tracked, how many visitor and most occupied spaces.



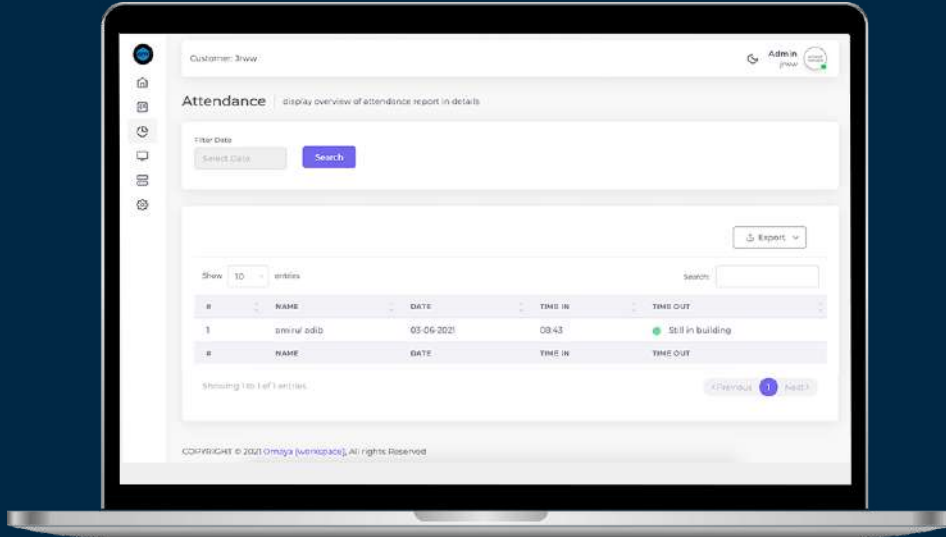
## Asset Management.

Asset management let you add key asset into the platform. With asset management you can track if asset is in one space for too long for logistic or track asset is moved to another space.

# Employee Management.

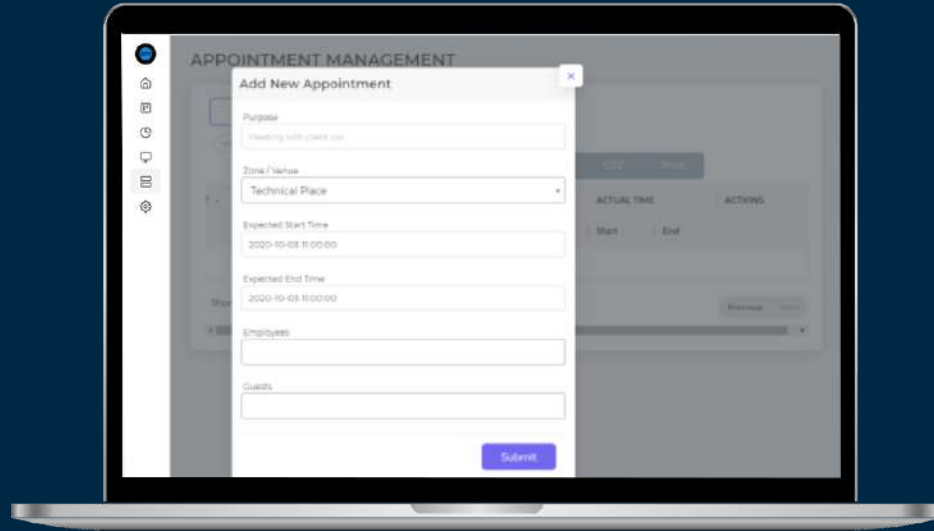


Employee management let you manage all your employees and their tag, you can add more biodata detail into the employee such as date of birth and more. You can define the employee grouping as well as work shift for security control for example send alert to security team if employee come to work on non working days.



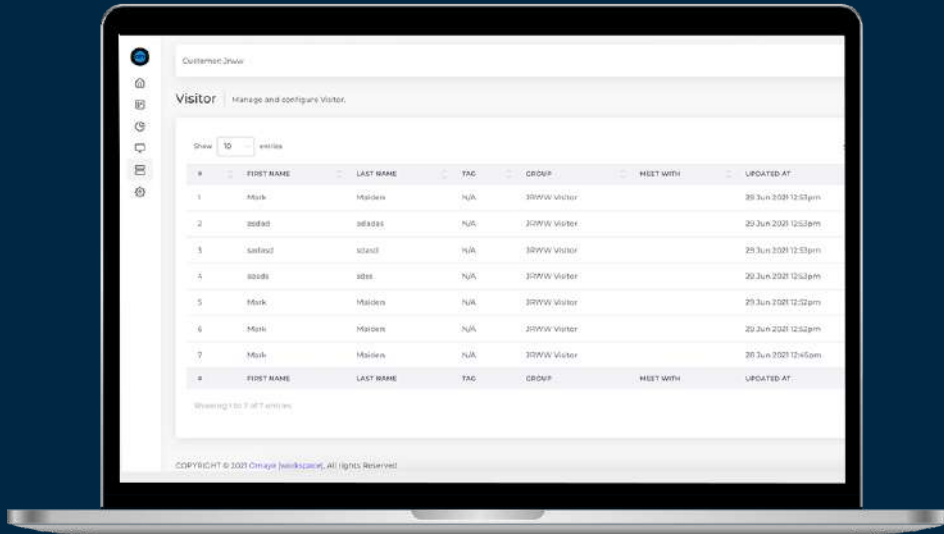
## Employee Attendance.

With workspace you can have an detail report on employee attendance in a easy to read data , key statistic as well as export to your HRM solutions.



## Appointment Schedule.

Schedule in advance and plan the space where the visitor can access the space allowed. You can use our analytics report to check if scheduled visitor does check in on the scheduled time or not.



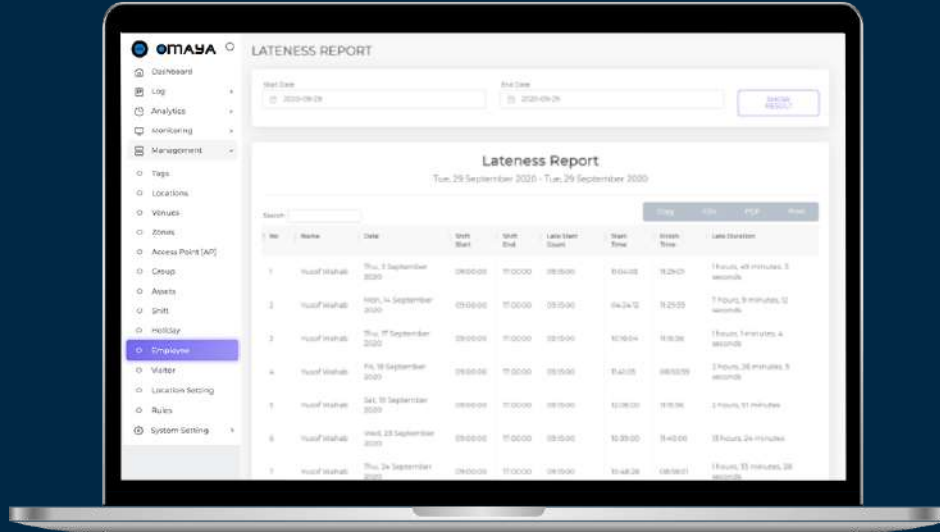
## Visitor Management.

Omayya visitor management provide a complete solutions to manage your visitor, you can schedule in advance visitor as well as provide tag to walk in visitor to ensure all are tag.

Rules can be added to ensure visitor does not wander off to restricted space and track all their movement.

## Lateness Reporting.

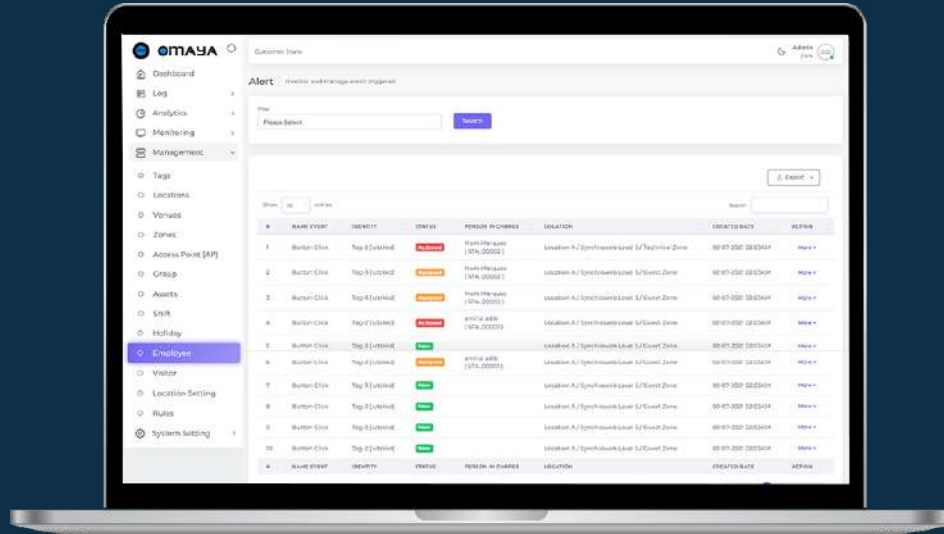
If required , our lateness report will provide a detail logs of employee stay within your workspace venue. These are based on their shift data and work schedule to ensure operation efficiency. Alert can be triggered if employee did not show up to work for more than certain definable hour to ensure safety and compliance.



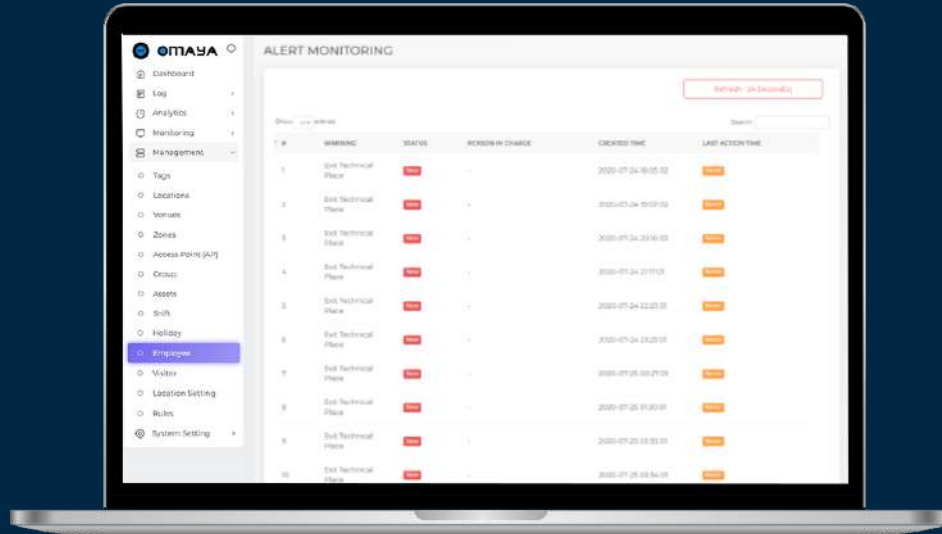
# Alert Management.

Alert management proactively governs your workspace for any issue that arises.

Alert management supports automation to push and trigger data to 3<sup>rd</sup> party software solutions such as CMS or others.

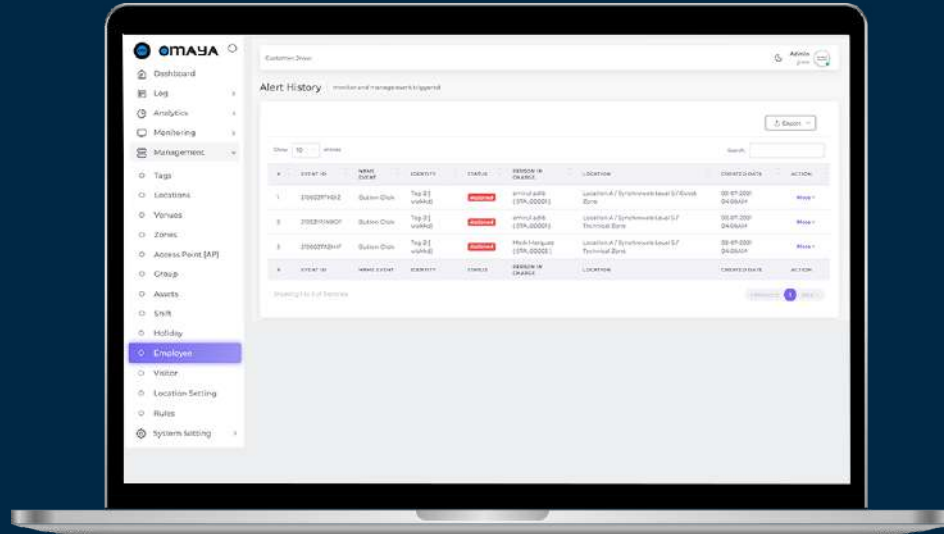






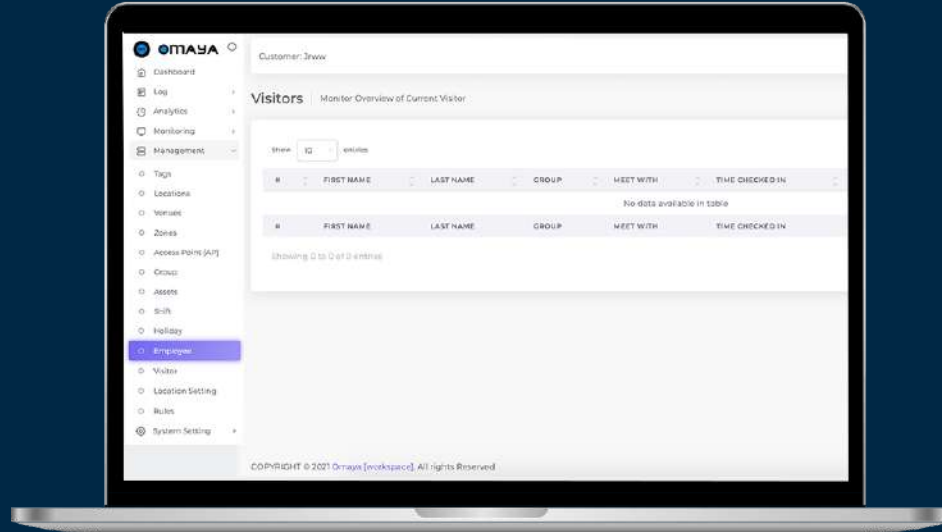
## Alert Monitoring.

Alert monitoring provide you any alert that trigger immediately and report it .



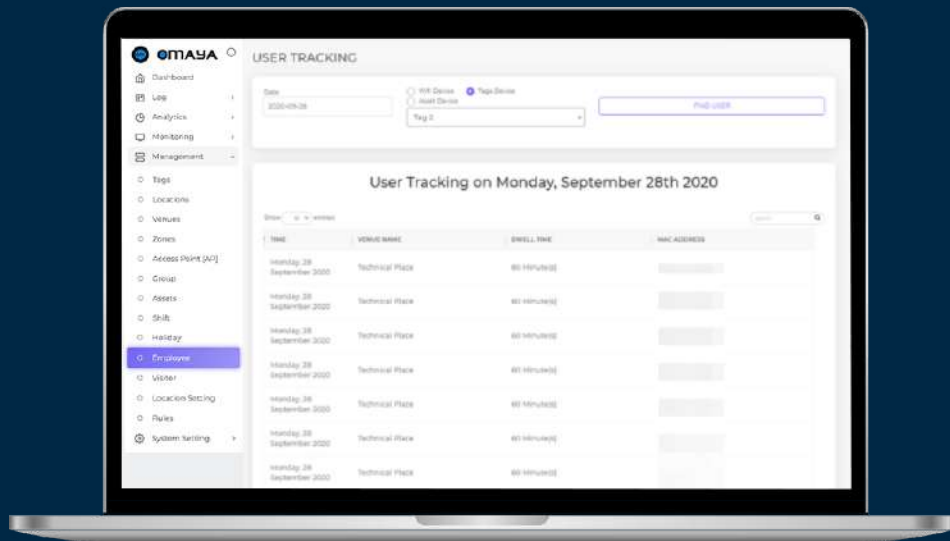
## Alert Panic.

Tag that have alert button can be configure to perform emergency call assistance. Employee just need to press the button under duress situation and alert will be trigger with location of employee.



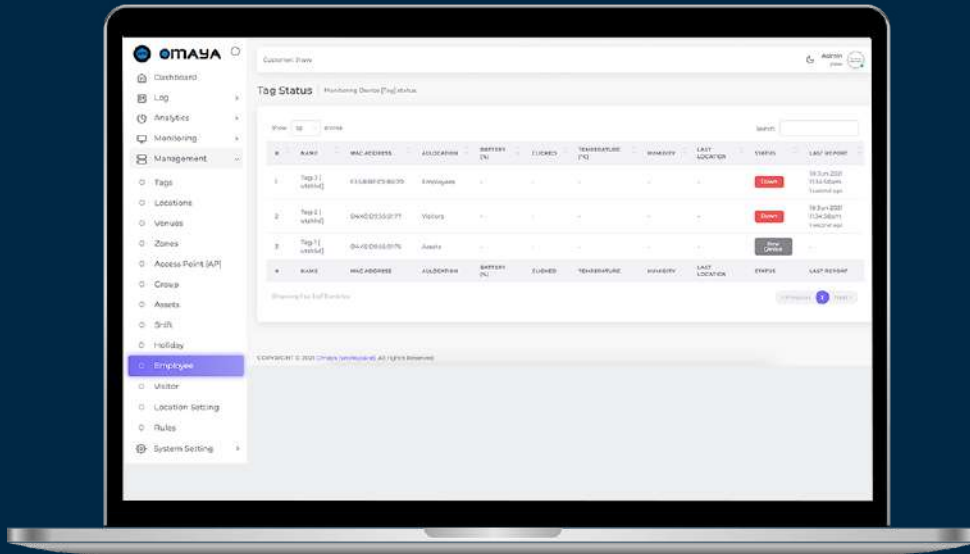
## Visitor Tracking.

Track visitor in real-time the whereabouts the visitor is using visitor monitoring.



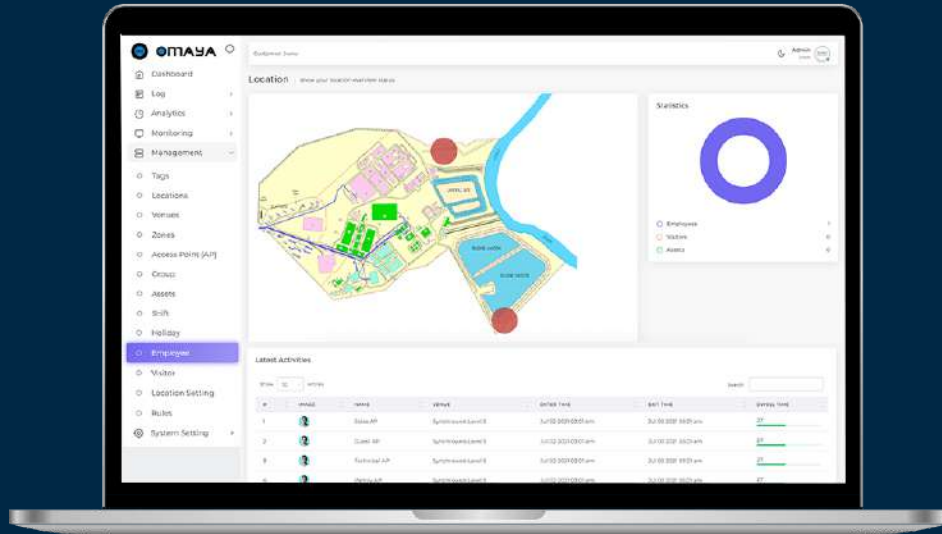
## User & Asset Tracking.

Track tracking to understand movement and historic movement within your venue of the users or asset.



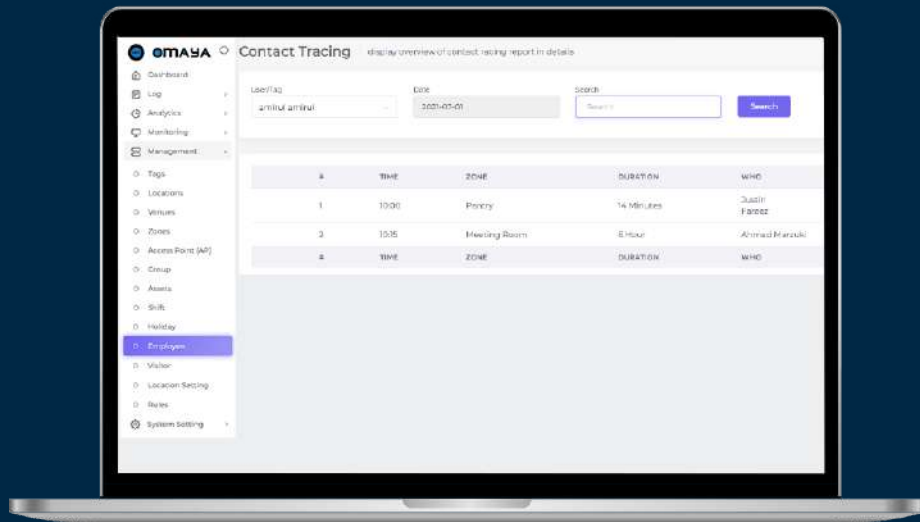
## Tag Status.

Tag status provide you overview of all the tag registered in your organisation. It will display all tag key data such as battery level, humidity and position



## Visualize Tracking.

Have real-time view of all employee , visitor and asset in a live map



## Contact Tracing.

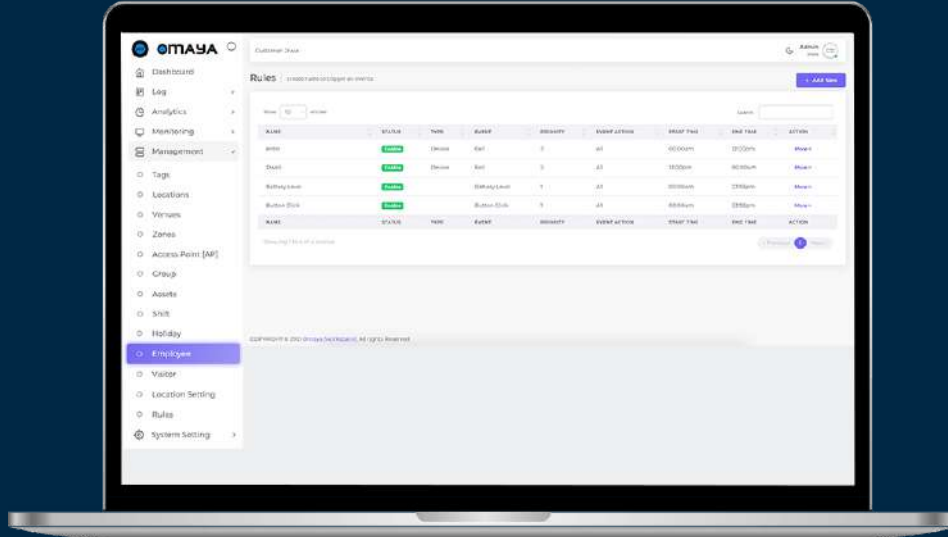
Display overview of individual close contact

# Rules Automation.

One of key feature of Omayya Workspace is automation. Using rules automation you can setup functional rules to optimize the Safety, operation, productivity of your workspace.

Such as rules on button is pressed on tag for calling help or asset tag button for security to ensure patrol is done.

Or entry of restricted zone to certain personal at any given time set. The automation governing option is limitless.





# Employee Mustering.

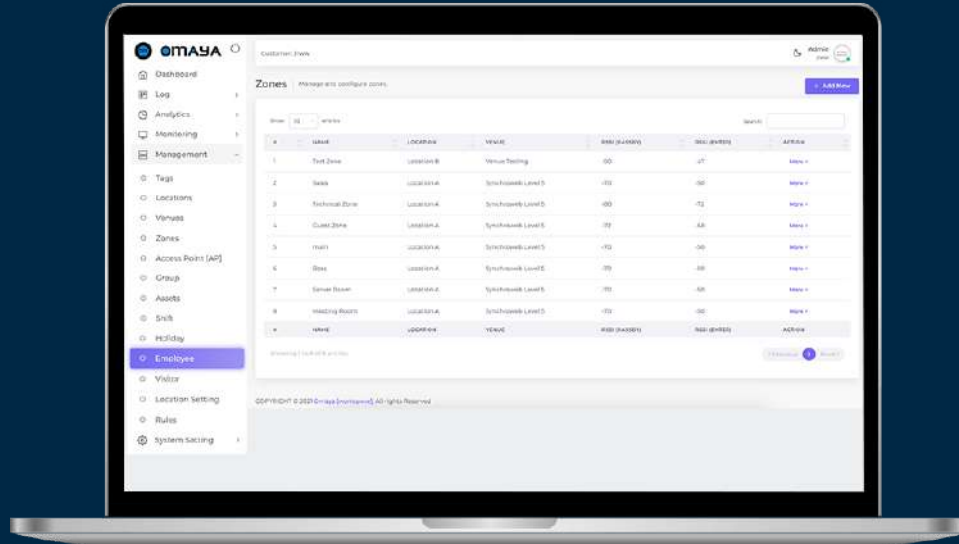


Use it to as prevention of too many employee or asset muster in a space or as way to ensure all employee check in , into said space during evacuation.

# Secure Zone

Set up space with access control, when employee enter space that they should not have access , an alarm will be triggered for 24/7 security management

You can also set the zone to detect sudden change in temperature in the space for fire detection or ambient air control failure.



The background is a dark navy blue. It is decorated with various geometric elements: small squares in white, light blue, and orange, some of which are solid and others are outlines. Thin white vertical lines of varying lengths are scattered across the page. The text 'SUCCESS STORIES' is centered in the middle of the image.

# SUCCESS STORIES

# Pub's Johor Waterwork JRWW, Johor Bharu

The Public Utilities Board (PUB) was set up as a statutory board in 1963 to coordinate the supply of electricity, piped gas, and water for Singapore.

Location tracking: As part of the JRWW's project, management wanted to capture and track the movement of the staff or public visiting the building sites. They wanted to use the data to assess current and future operational needs. In order to achieve this, they approached Omayya Workspace.

Each user entering the premise will be given a tag which acts as a tracker. The Access Points around the premise will detect the tag whereabouts and management will be able to monitor it through Omayya Workspace.

**SYNCHROWEB**  
TECHNOLOGY



*"In Synchronweb We Trust"*



# THANK YOU

Does anyone have any questions?



[sales@synchronweb.com](mailto:sales@synchronweb.com)



+603-5880 5486



C-1-5, SetiaWalk, Persiaran Wawasan,  
Pusat Bandar Puchong, 47160,  
Puchong, Selangor, Malaysia.

Follow us on Social Media

